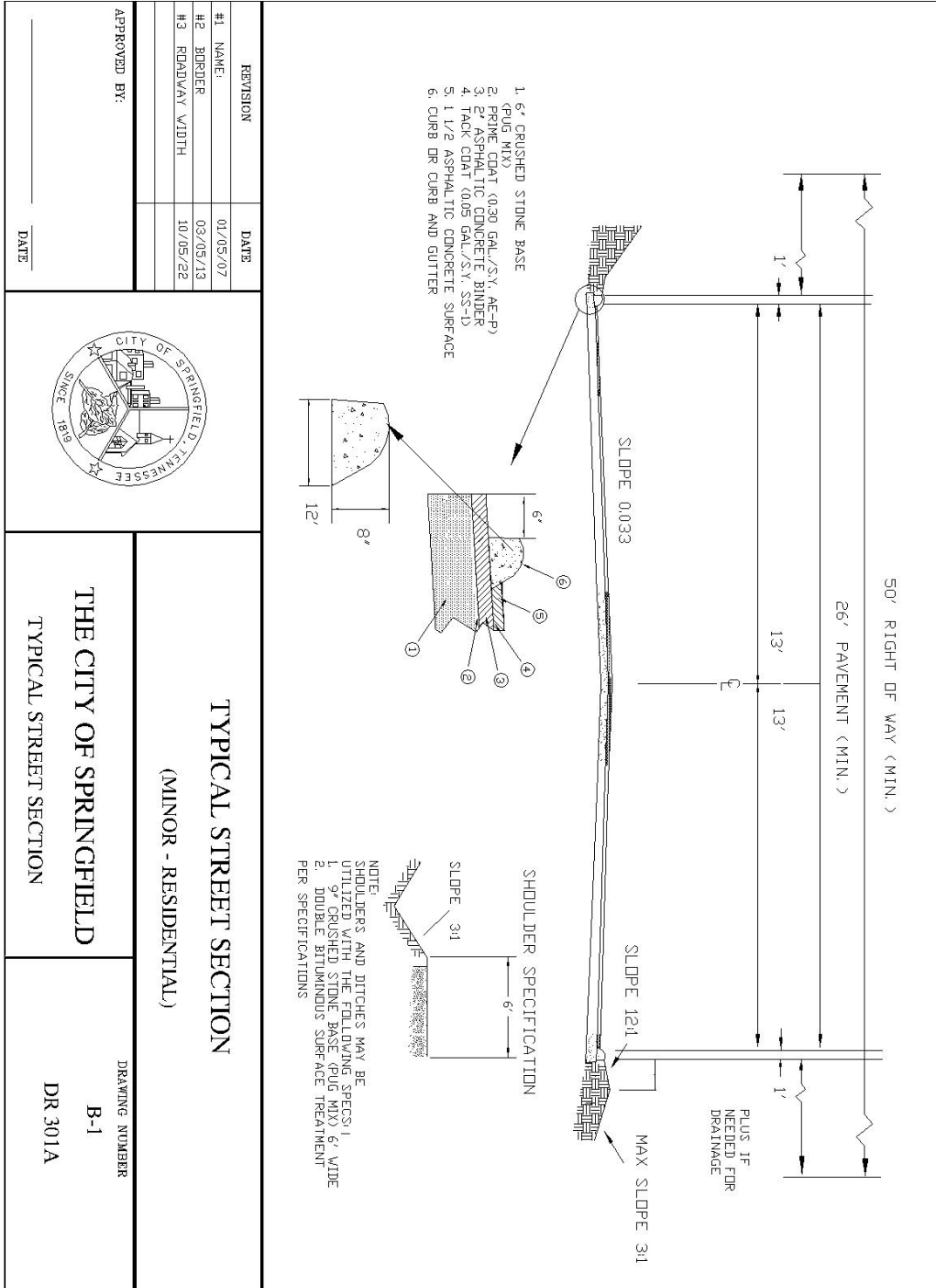
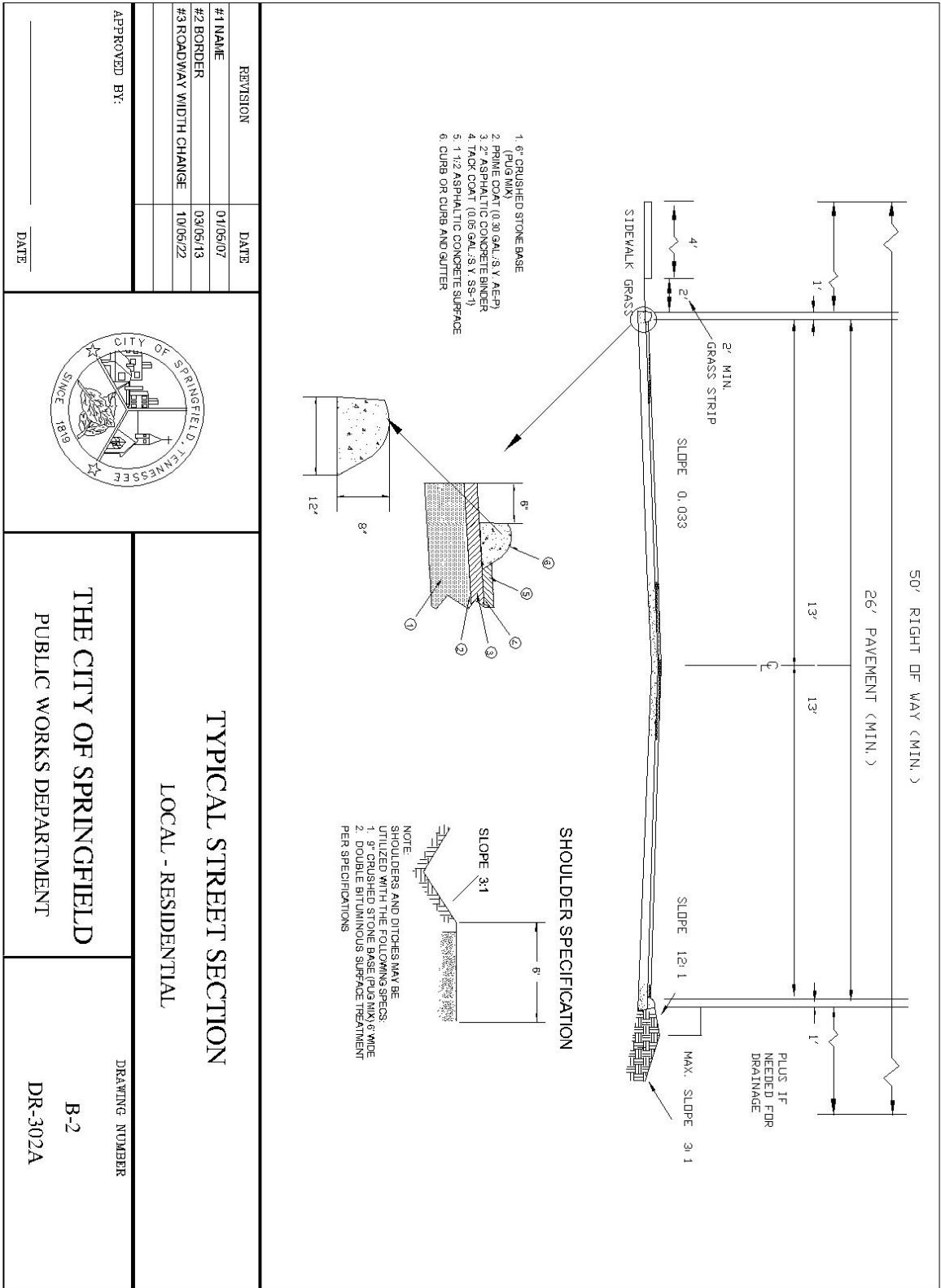


# APPENDIX – B - PUBLIC WORKS DETAILS

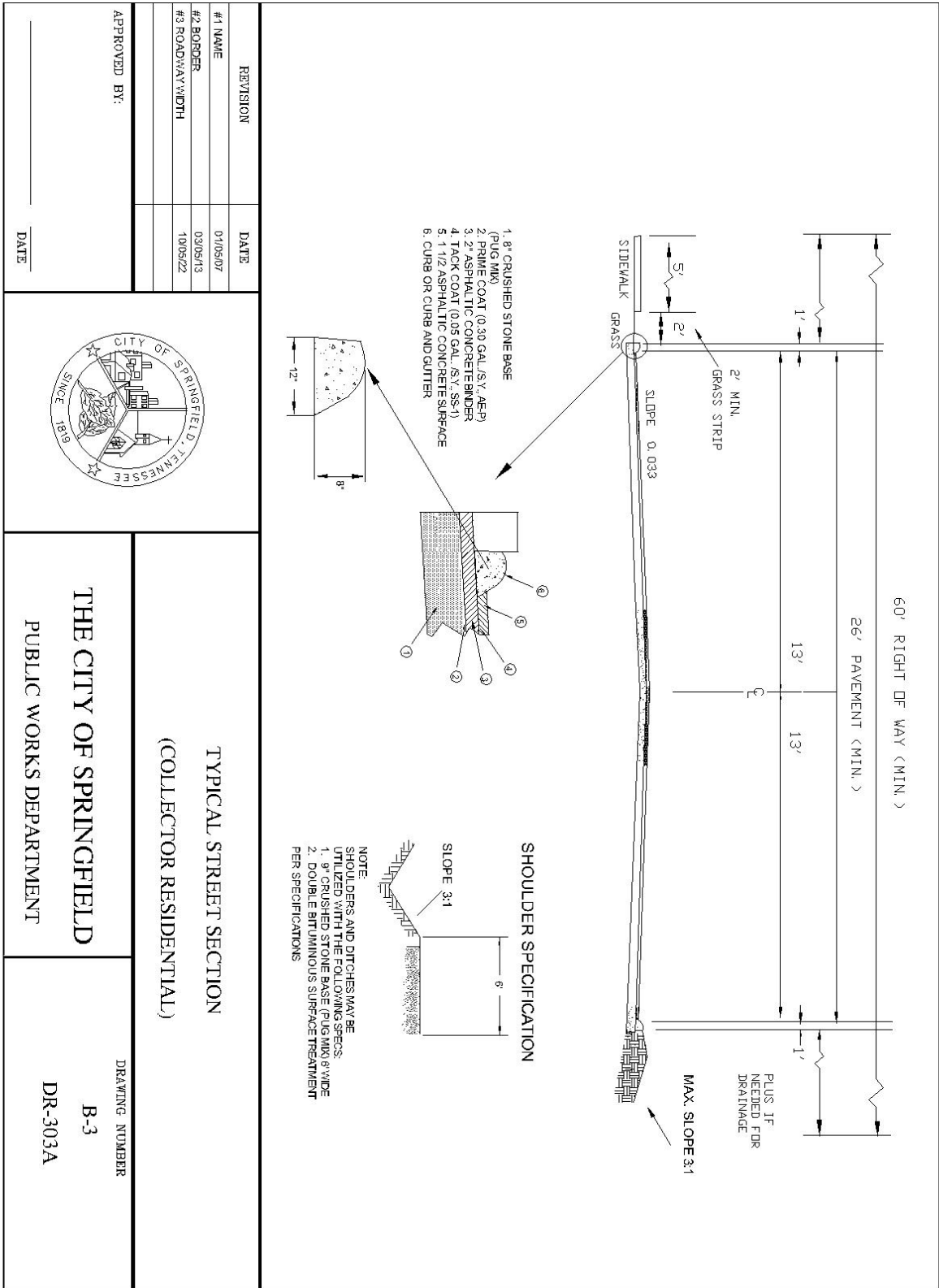
## Detail B-1 Typical Street Section – Minor - Residential



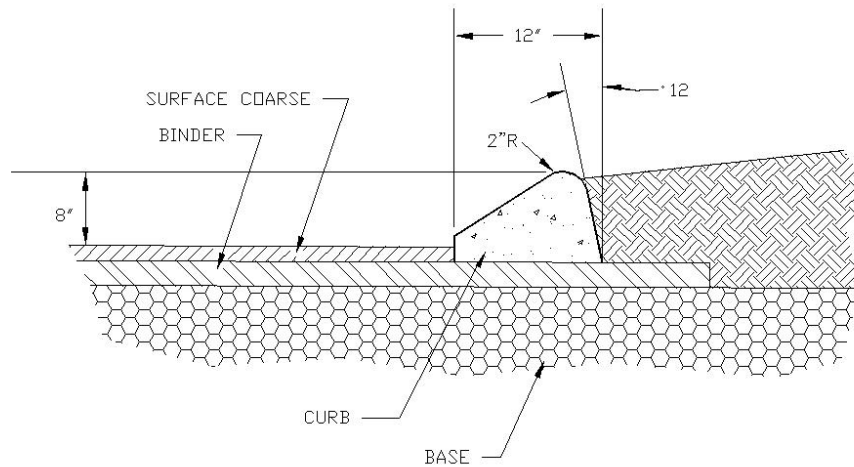
Detail B-2 Typical Street Section – Local Residential



Detail B-3 Typical Street Section - Collector



Detail B-4 Extruded Curb



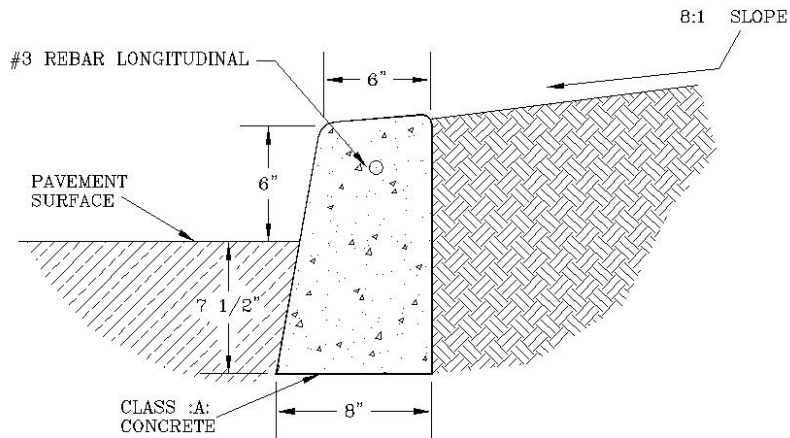
N.T.S.

TYPICAL CROSS-SECTION

1. EXPANSION JOINTS TO BE SPACED A MAX. OF 100' APART, OR AS DIRECTED BY THE ENGINEER.
2. EXPANSION JOINTS WILL ALSO BE REQUIRED AT TANGENT POINTS, DRIVE RAMPS, AND INLETS.
3. CONSTRUCTION JOINTS ARE TO BE CUT INTO CURB AND GUTTER EVERY 10' TO A DEPTH OF D/4.
4. CONCRETE TDDT CLASS "A"

REVISION	DATE		<h2>EXTRUDED CURB DETAIL</h2>		
			<p><b>THE CITY OF SPRINGFIELD</b> <b>PUBLIC WORKS DEPARTMENT</b></p>		
					DRAWING NUMBER
					B-4
					(ST-203)
APPROVED BY:  _____		DATE  _____			


Detail B-5 Standard Post Curb



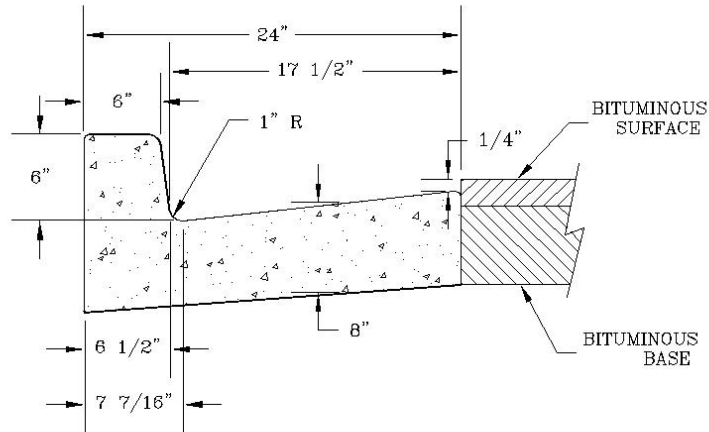
N.T.S.

TYPICAL CROSS-SECTION

1. EXPANSION JOINTS TO BE SPACED A MAX. OF 100' APART, OR AS DIRECTED BY THE ENGINEER.
2. EXPANSION JOINTS WILL ALSO BE REQUIRED AT TANGENT POINTS, DRIVE RAMP, AND INLETS.
3. CONSTRUCTION JOINTS ARE TO BE CUT INTO CURB AND GUTTER EVERY 10' TO A DEPTH OF D/4.
4. CONCRETE TDOT CLASS "A"
5. SAW BOTH SIDES OF EXISTING CURB

REVISION	DATE		<h2>STANDARD POST CURB</h2>	
			<p><b>THE CITY OF SPRINGFIELD</b> PUBLIC WORKS DEPARTMENT</p>	
APPROVED BY: _____ _____ DATE		DRAWING NUMBER B-5 (ST-201)		

Detail B-6 Standard 24 inch Curb and Gutter



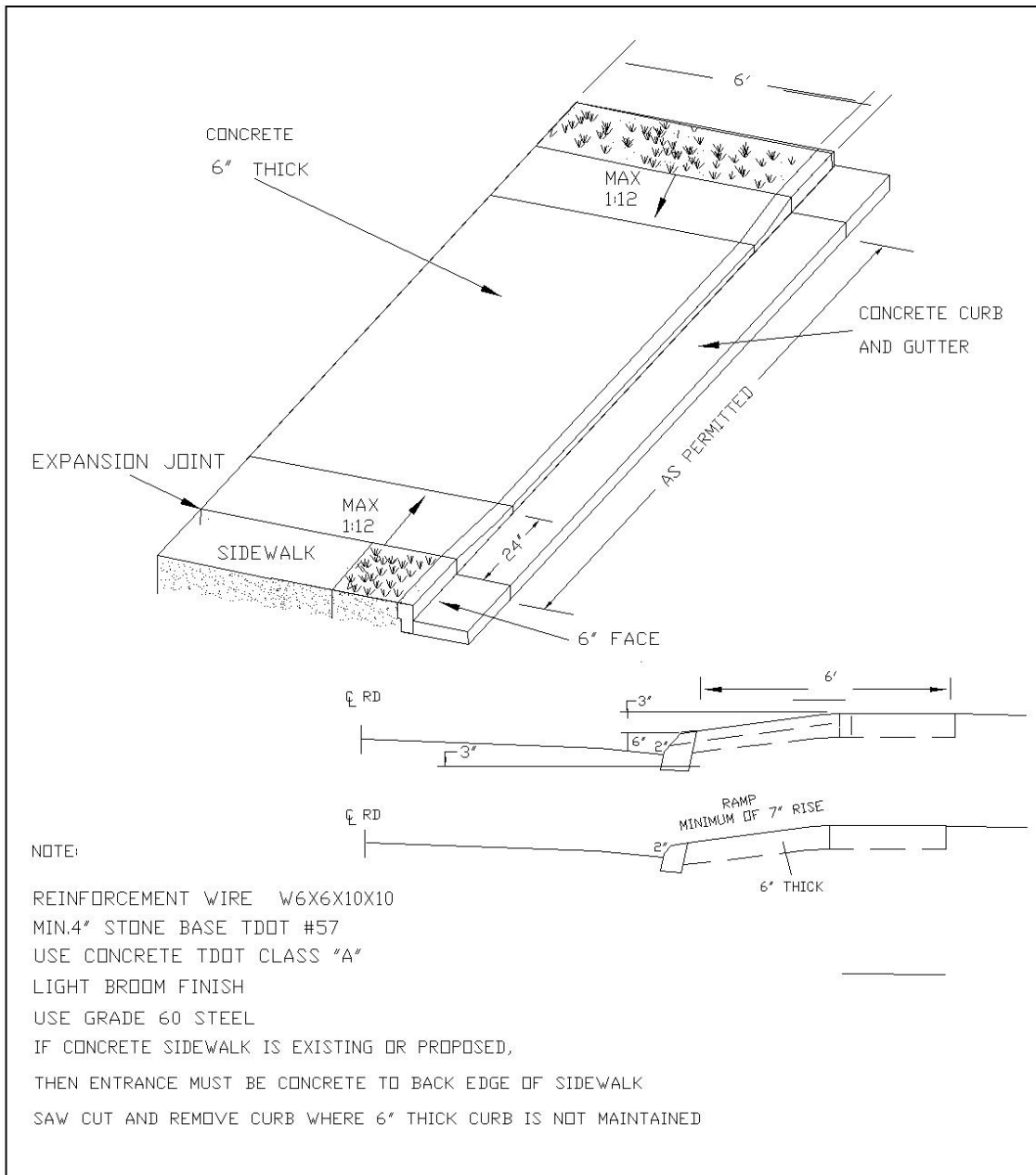
N.T.S.


TYPICAL CROSS-SECTION

1. EXPANSION JOINTS TO BE SPACED A MAXIMUM OF 100' APART, OR AS DIRECTED BY THE ENGINEER.
2. EXPANSION JOINTS WILL BE REQUIRED AT TANGENT POINTS, DRIVE RAMPS, AND INLETS.
3. CONSTRUCTION JOINTS ARE TO BE CUT INTO CURB AND GUTTER, EVERY 10', TO A DEPTH OF D/4.
4. CONCRETE - TDOT CLASS "A"

REVISION	DATE		STANDARD 24" CURB AND GUTTER		
			<b>THE CITY OF SPRINGFIELD</b> <b>PUBLIC WORKS DEPARTMENT</b>		
					DRAWING NUMBER
					B-6
					(ST-204)
APPROVED BY:  _____ <div style="text-align: right;">DATE</div>					

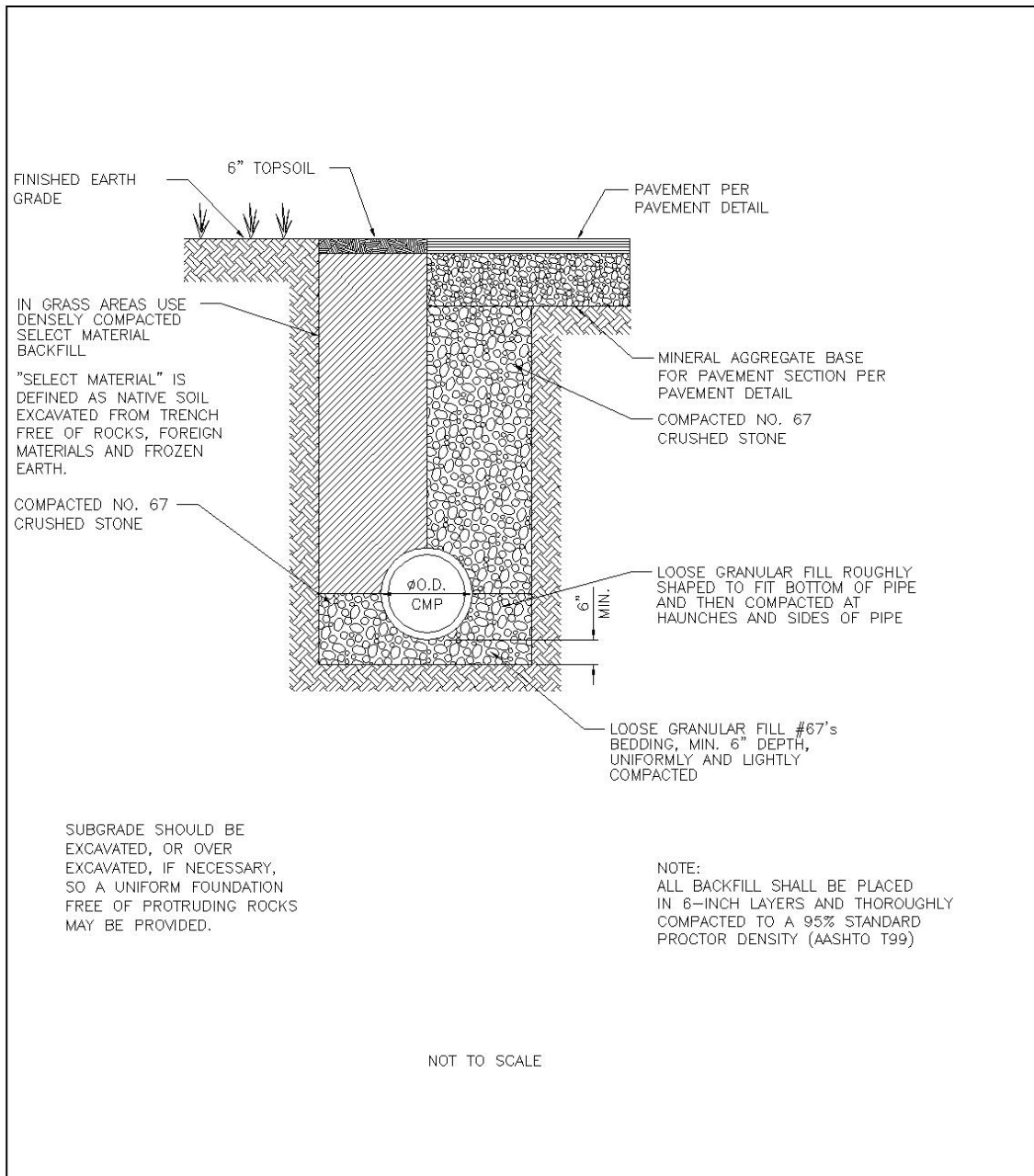
**Detail B-7 Typical Driveway Curb and Gutter**




REVISION	DATE		
#1 DRAWING	2/21/2013		
APPROVED BY:		<p align="center"><b>TYPICAL DRIVEWAY CURB AND GUTTER</b></p> <p align="center"><b>THE CITY OF SPRINGFIELD</b> PUBLIC WORKS DEPARTMENT</p>	DRAWING NUMBER
_____ DATE			B-7 (DR-911)



# Detail B-9 CMP (Corrugated Metal Pipe) Bedding



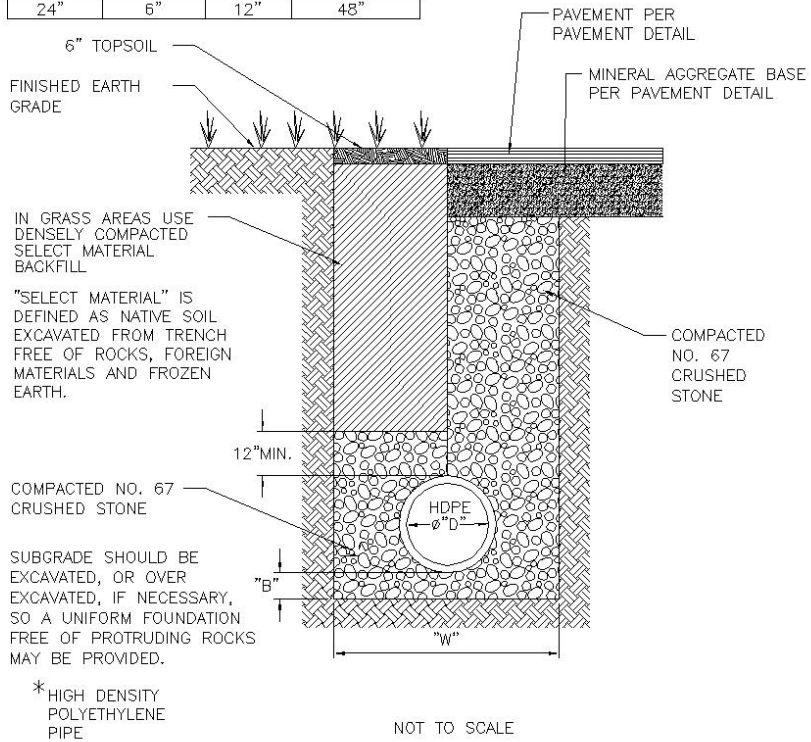
REVISION	DATE		<p align="center"><b>CMP BEDDING</b> (NEW CONSTRUCTION)</p>
#1 Change to Portrait	03/11/13		
			<p align="center"><b>THE CITY OF SPRINGFIELD</b> PUBLIC WORKS DEPARTMENT</p>
APPROVED BY:	DATE	<p align="center">DRAWING NUMBER</p> <p align="center">B-9 (DR-318)</p>	


# Detail B-10 HDPE (High Density Polyethylene) Pipe Bedding

MINIMUM DIMENSIONS  
TRENCH OR OPEN DITCH INSTALLATIONS

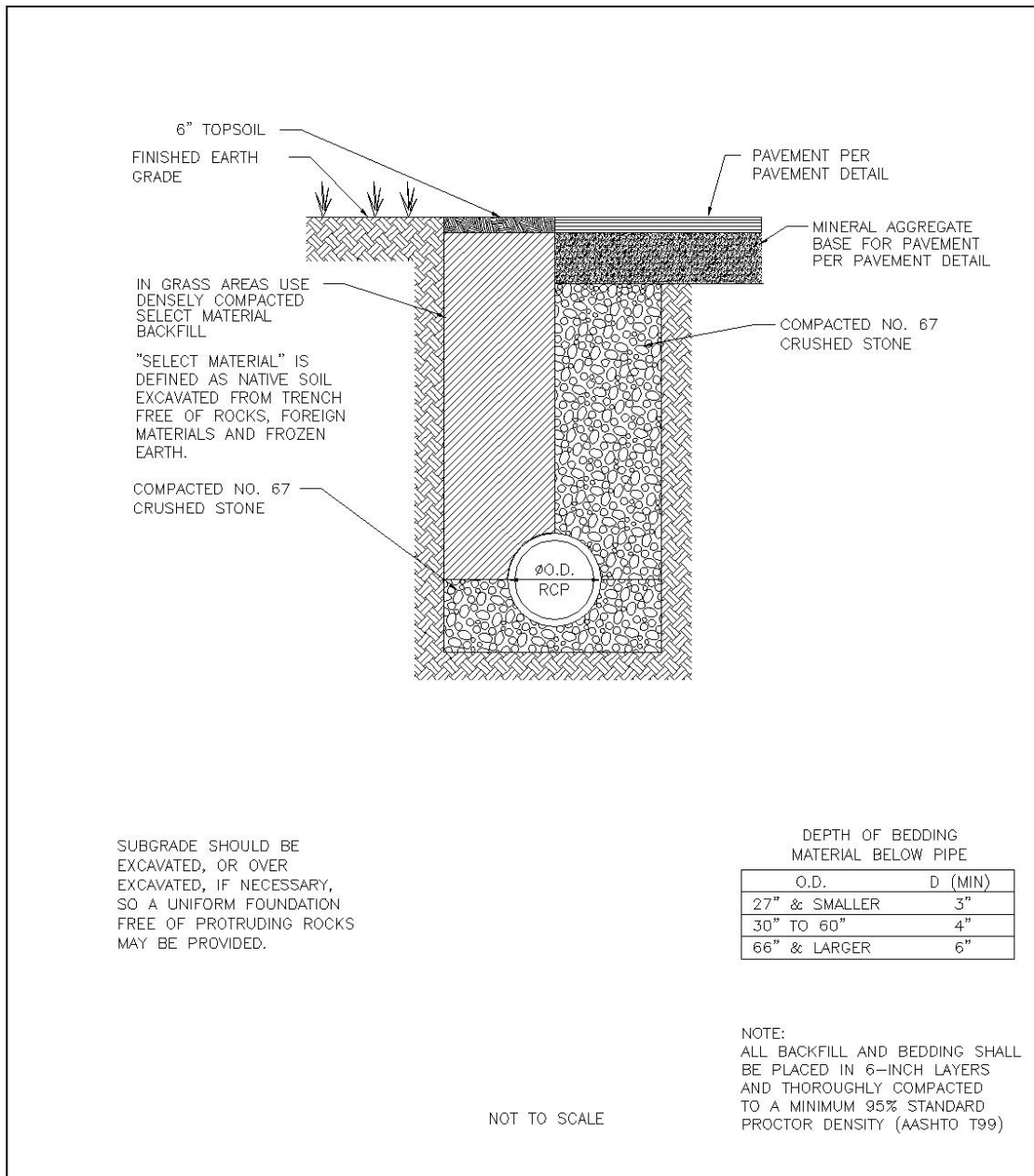
NOMINAL DIAMETER "D"	MINIMUM THICKNESS "B"	MINIMUM COVER	MIN. TRENCH WIDTH "W"
3"	4"	12"	20"
4"	4"	12"	21"
6"	4"	12"	23"
8"	4"	12"	25"
10"	4"	12"	28"
12"	5"	12"	31"
15"	5"	12"	34"
18"	6"	12"	39"
24"	6"	12"	48"


NOTE:  
ALL BACKFILL AND  
BEDDING SHALL  
BE PLACED IN  
6-INCH LAYERS  
AND THOROUGHLY  
COMPACTED TO A  
MINIMUM 95%  
STANDARD  
PROCTOR DENSITY  
(AASHTO T99)



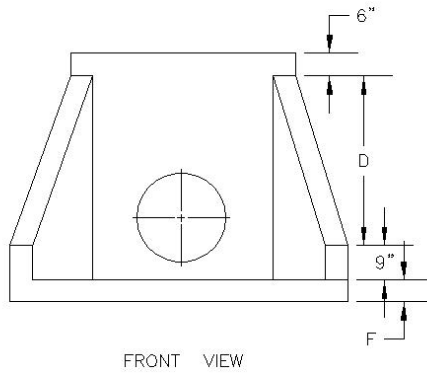
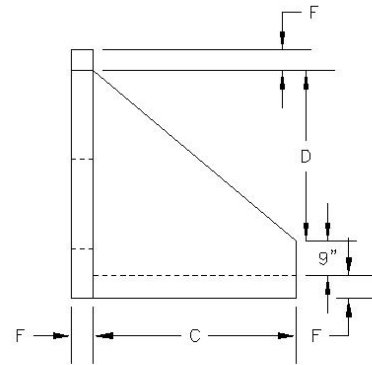
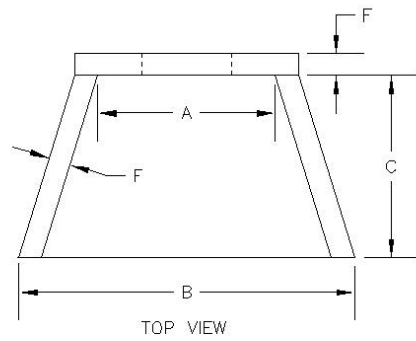
REVISION	DATE		<p style="text-align: center;"><b>HDPE * PIPE BEDDING</b> (SMOOTH INSIDE) (NEW CONSTRUCTION)</p>
#1 TITLE	03/12/13		
<p>APPROVED BY: _____</p> <p style="text-align: right;">DATE _____</p>		<p style="text-align: center;"><b>THE CITY OF SPRINGFIELD</b> PUBLIC WORKS DEPARTMENT</p>	<p>DRAWING NUMBER</p> <p style="text-align: center;">B-10 (DR-319)</p>

**Detail B-11 RCP (Reinforced Concrete Pipe) Bedding – Class B**




REVISION	DATE		RCP BEDDING - CLASS B (NEW CONSTRUCTION)		
			<b>THE CITY OF SPRINGFIELD</b>	DRAWING NUMBER	
				B-11	
				(DR-320)	
APPROVED BY:					
_____ DATE					

**Detail B-12 Winged Concrete Headwall**

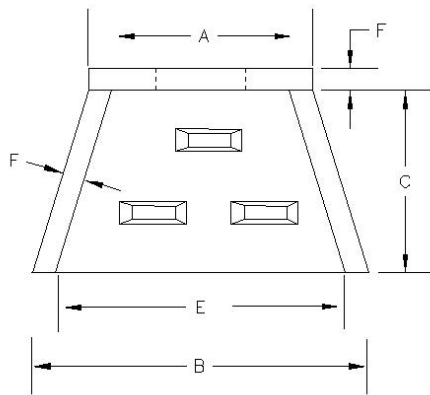


SIZES	4'	6'	8'	10'	
A	32"	48"	72"	96"	
B	48"	72"	96"	120"	
C	30"	44"	50"	56"	
D	25"	36"	52"	66"	
E	24"	36"	59"	83"	
F	NA	8"	8"	8"	
Max Opening	18"	26"	40"	60"	
WT/#	1090	3130	5625	8575	

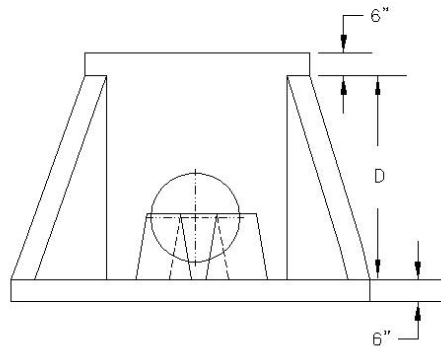
CONCRETE: 4000 PSI AT 28 DAYS  
 REINFORCED WITH #4 BARS 10" O/C  
 EACH WAY WITH WINGS AND TOE SLAB  
 DOWELED TO HEADWALL WITH #5 BARS

REVISION	DATE		<b>WINGED CONCRETE HEADWALL</b>		
			<b>THE CITY OF SPRINGFIELD PUBLIC WORKS DEPARTMENT</b>		
					DRAWING NUMBER
					B-12
					(DR-150)
APPROVED BY:					
_____ DATE					

**Detail B-13 Winged Concrete Headwall with Energy Dissipators**



TOP VIEW



FRONT VIEW

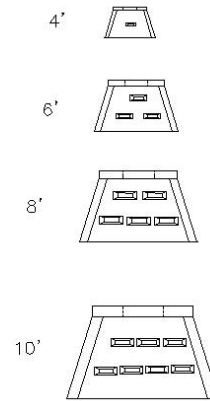

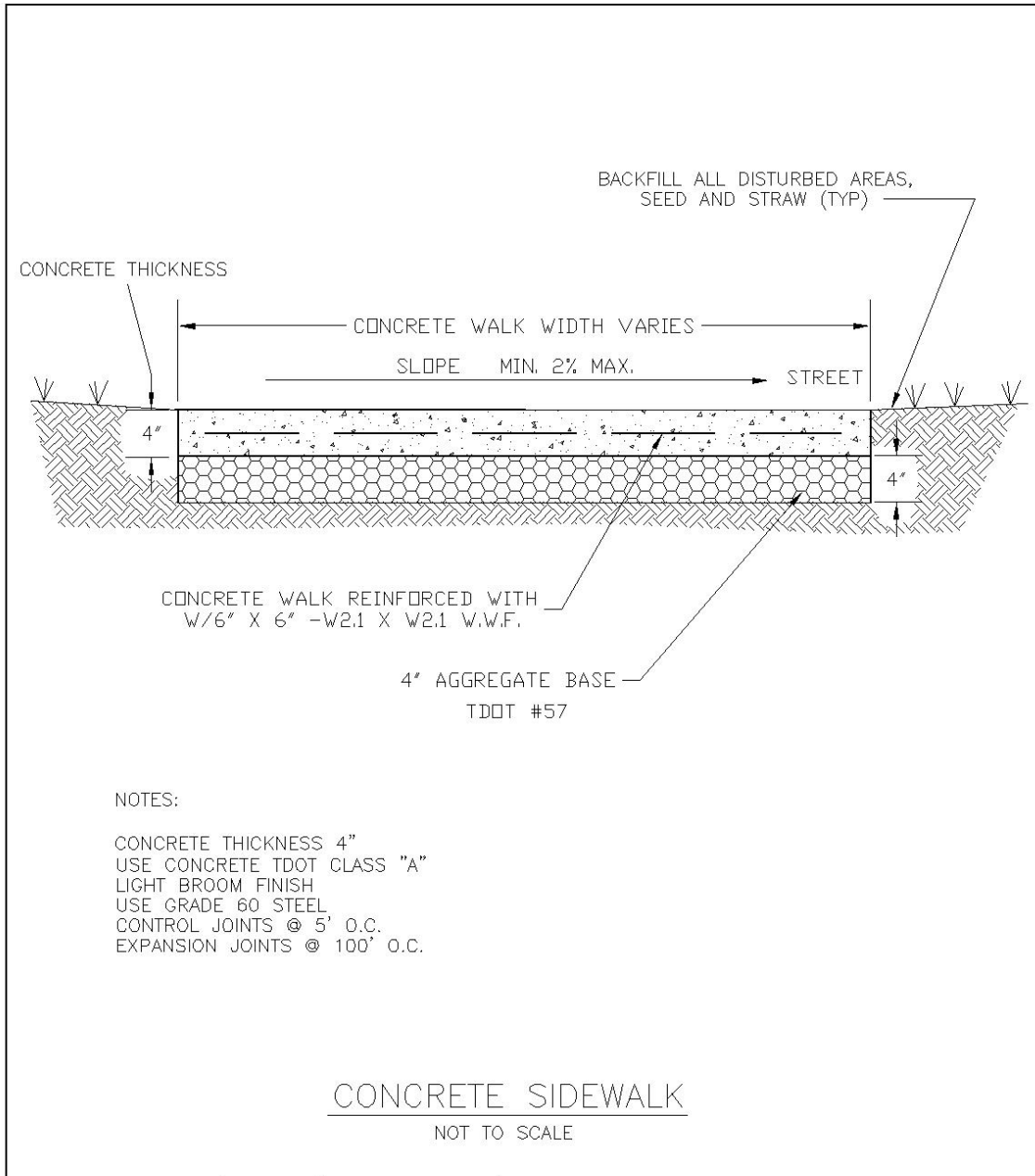



TABLE OF DIMENSIONS					
SIZES	4'	6'	8'	10'	
A	32"	48"	72"	96"	
B	48"	72"	96"	120"	
C	30"	44"	50"	56"	
D	25"	36"	52"	66"	
E	24"	36"	59"	83"	
F	NA	8"	8"	8"	
Max Opening	18"	26"	40"	60"	
WT/#	1090	3130	5625	8575	

CONCRETE: 4500 PSI AT 28 DAYS  
 REINFORCED WITH #4 BARS 10" O/C  
 EACH WAY WITH WINGS AND TOE SLAB  
 DOWELED TO HEADWALL WITH #5 BARS

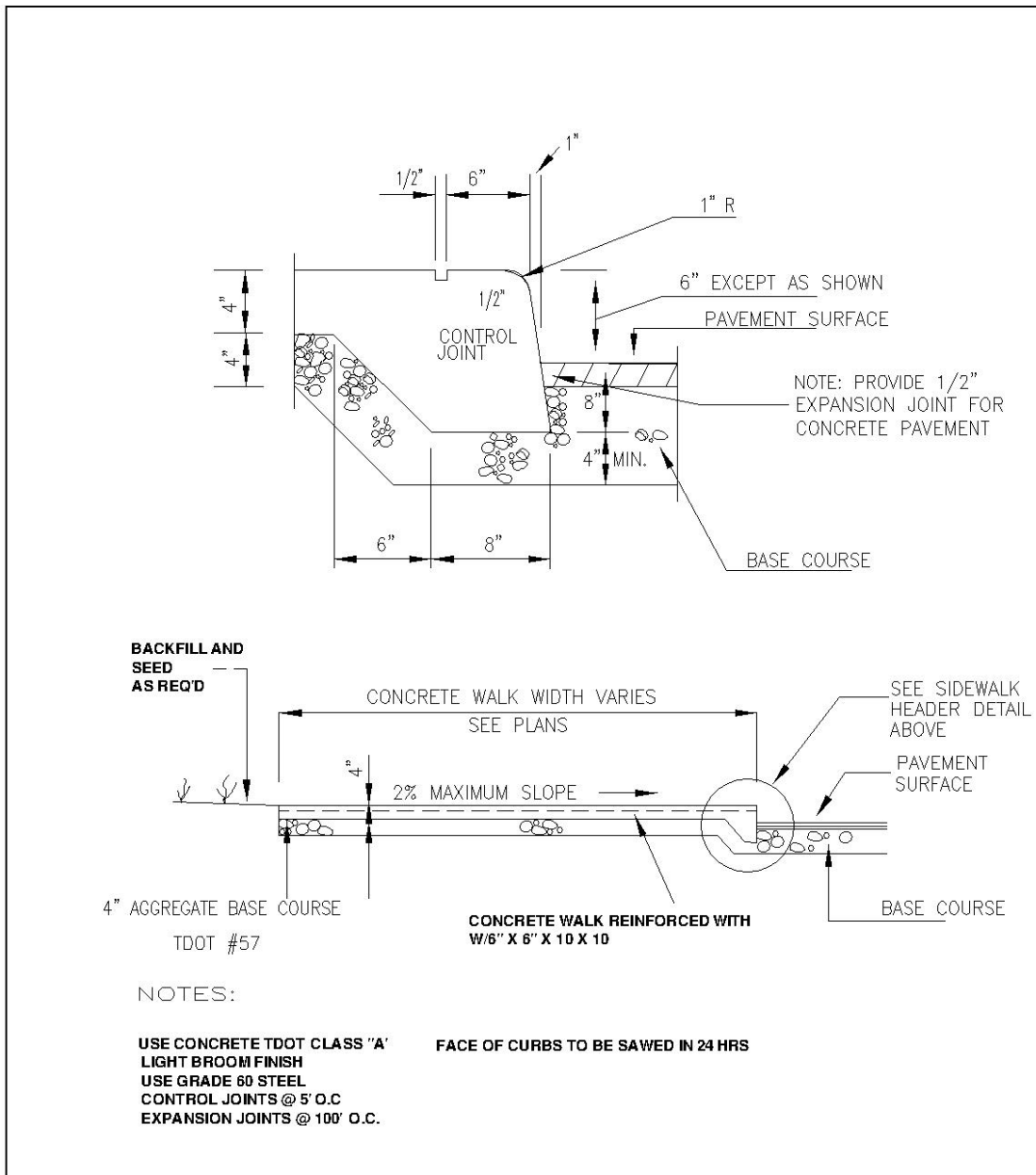
REVISION	DATE		<p align="center"><b>WINGED                  CONCRETE HEADWALL                  with ENERGY DISSIPATORS</b></p>	
			<p align="center"><b>THE CITY OF SPRINGFIELD                  PUBLIC WORKS DEPARTMENT</b></p>	<p align="center">DRAWING NUMBER                  B-13                  (DR-151)</p>
APPROVED BY:				
	DATE			


**Detail B-14 Concrete Sidewalk**



REVISION	DATE		<p><b>CONCRETE SIDEWALK</b></p>
			<p><b>THE CITY OF SPRINGFIELD</b></p> <p><b>PUBLIC WORKS DEPARTMENT</b></p>
APPROVED BY: _____ _____ DATE		<p><b>DRAWING NUMBER</b></p> <p><b>B-14</b></p> <p><b>(DR-181)</b></p>	

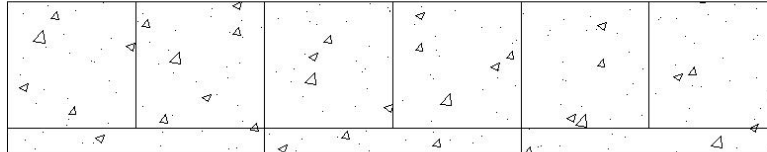
**Detail B-15 Typical Concrete Sidewalk and Curb Combination**



REVISION	DATE		TYPICAL CONCRETE SIDEWALK AND CURB COMBINATION
	11/5/07		
	07/24/09		
APPROVED BY:	DATE	THE CITY OF SPRINGFIELD PUBLIC WORKS DEPARTMENT	DRAWING NUMBER B-15 (DR-182)

Detail B-16 Standard Concrete Sidewalk Built To Curb


← EXPANSION JOINT TO BE SPACED A MAXIMUM OF 100' APART, OR AS DIRECTED BY THE SPRINGFIELD PUBLIC WORKS DEPARTMENT, TO MATCH CURB EXPANSION JOINTS, WHERE SIDEWALK IS BUILT TO CURB. →



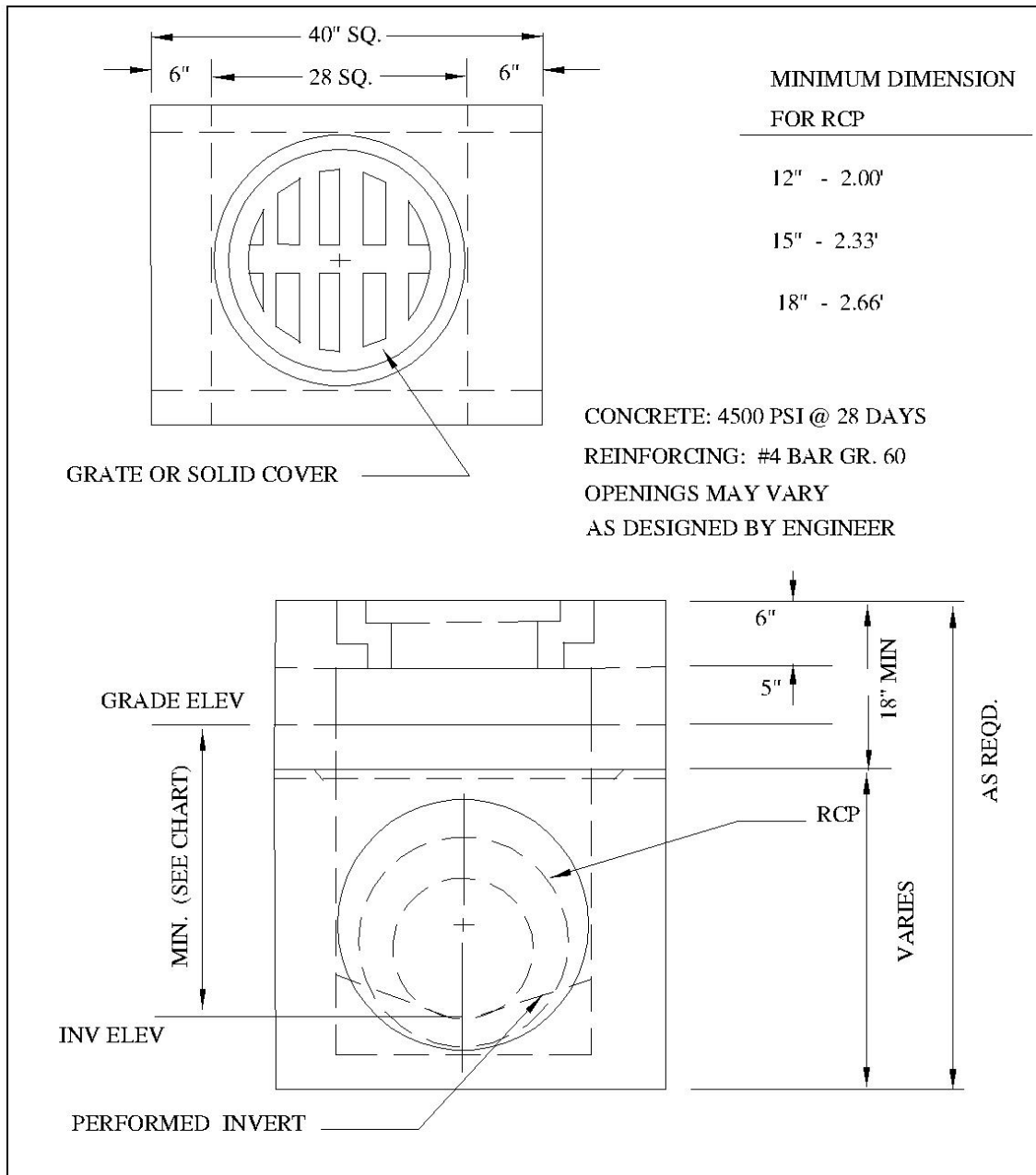
SIDEWALK-BUILT TO CURB

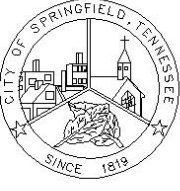
NOTES:

1. EXPANSION JOINTS TO BE SPACED A MAXIMUM OF 100' APART, OR AS DIRECTED BY SPRINGFIELD PUBLIC WORKS DEPARTMENT
2. EXPANSION JOINTS WILL BE REQUIRED AT TANGENT POINTS, DRIVE RAMPS, AND INLETS.
3. CONSTRUCTION JOINTS ARE TO BE CUT EVERY 5', TO A DEPTH OF D/4.
4. CONCRETE - TDOT CLASS "A"
5. WIRE MESH REQUIRED (6x6x10x10)
6. USE 4" AGGREGATE BASE (TDOT #57)
7. BACK OF SIDEWALK IS HIGHER AND HAS 2% SLOPE

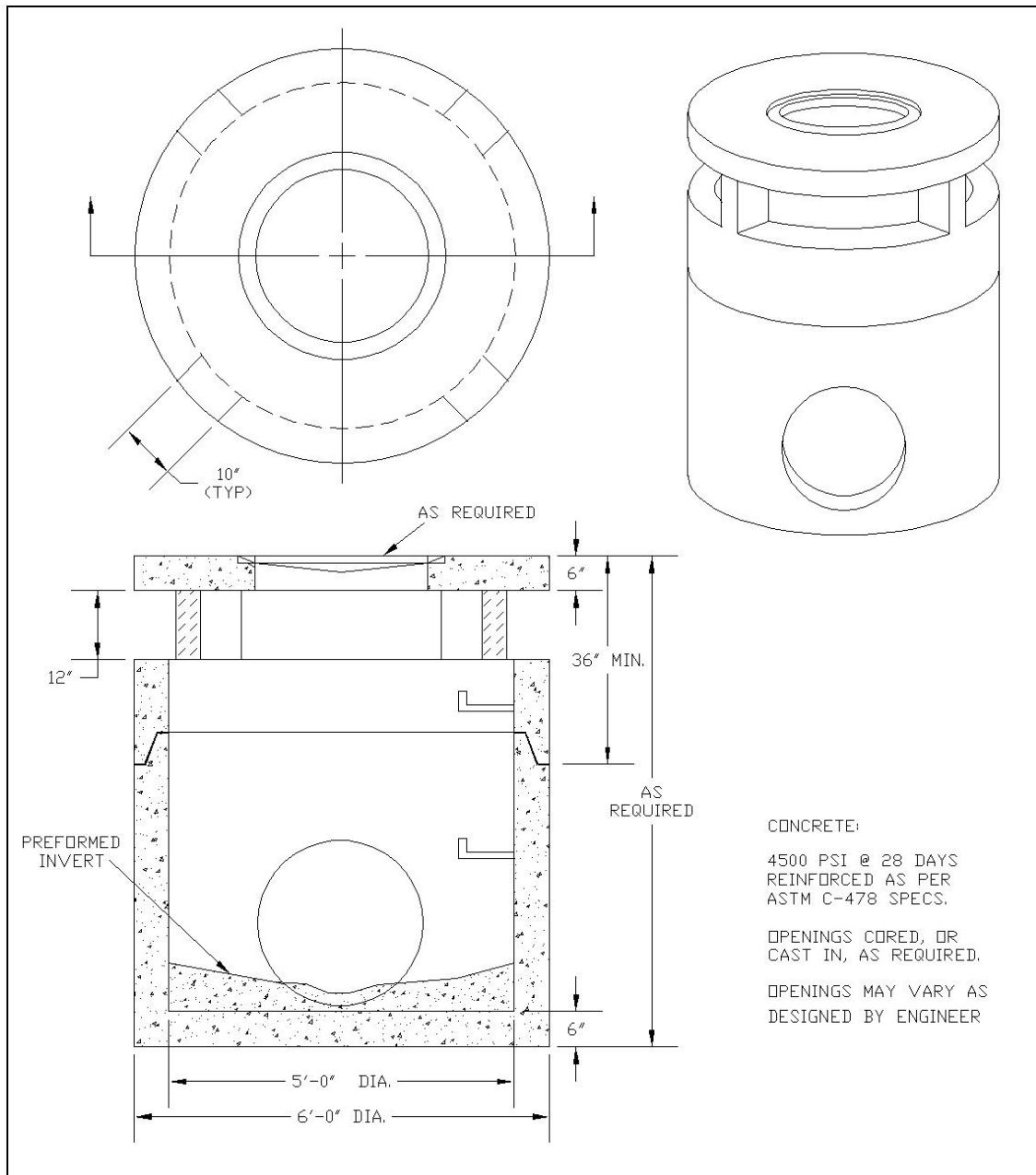
REVISION	DATE		STANDARD CONCRETE SIDEWALK BUILT TO CURB	
1. 2% SLOPE	12/06/17		THE CITY OF SPRINGFIELD	DRAWING NUMBER B-16 (ST-210)
APPROVED BY: _____ DATE				

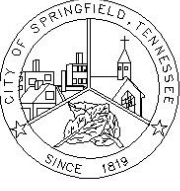
**Detail B-17 Square Detention Structure**



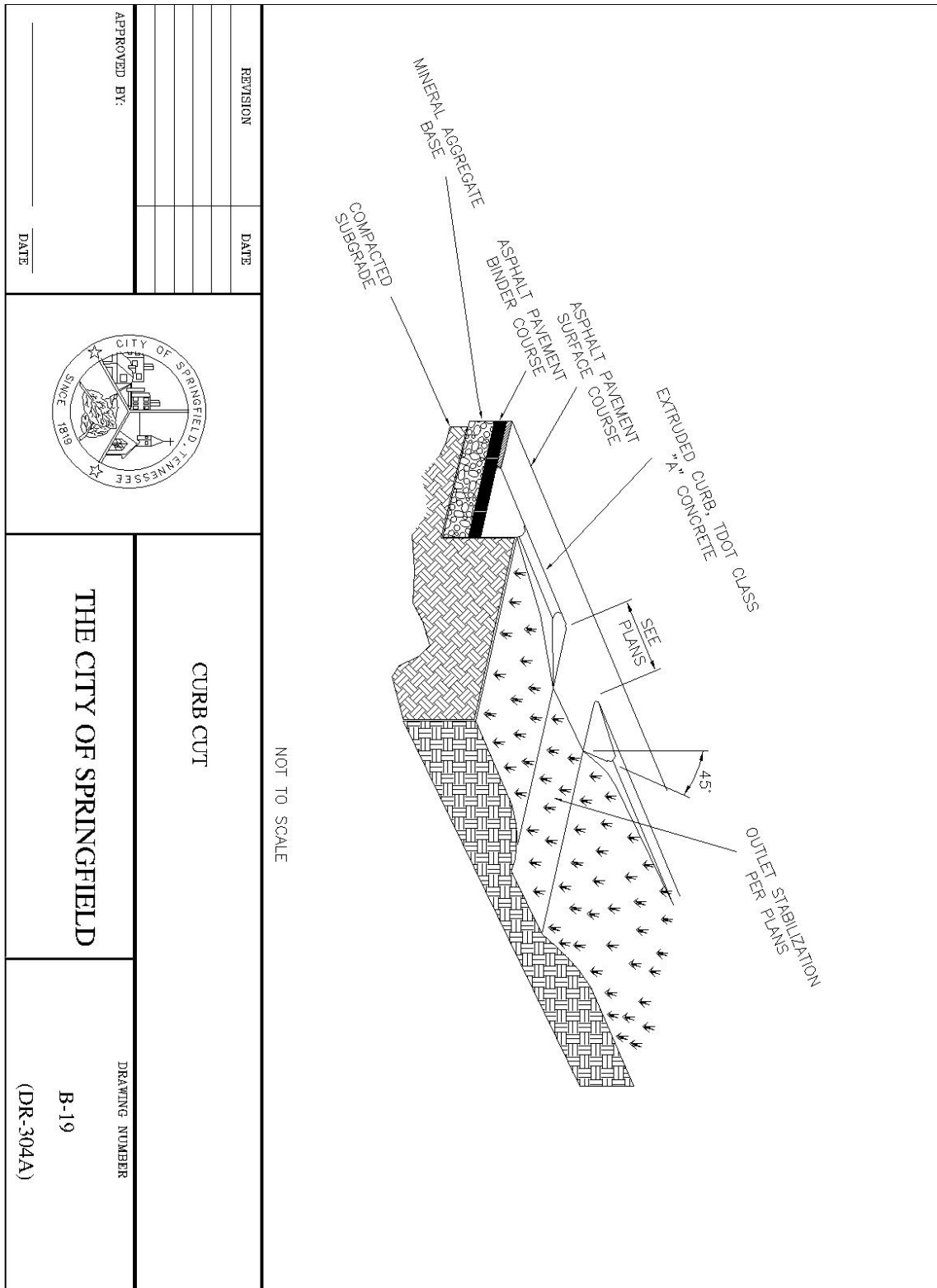
REVISION	DATE		SQUARE DETENTION STRUCTURE		
			<b>THE CITY OF SPRINGFIELD</b> <b>PUBLIC WORKS DEPARTMENT</b>	DRAWING NUMBER	
				B-17	
				(DR-122)	
APPROVED BY:					
DATE					

**Detail B-18 Round Detention Structure**



REVISION	DATE		ROUND DETENTION STRUCTURE		
			<b>THE CITY OF SPRINGFIELD</b> PUBLIC WORKS DEPARTMENT	DRAWING NUMBER	
				B-18	
				(DR-312)	
APPROVED BY: _____ DATE					

**Detail B-19 Curb Cut**



REVISION

DATE

APPROVED BY:

DATE



CURB CUT

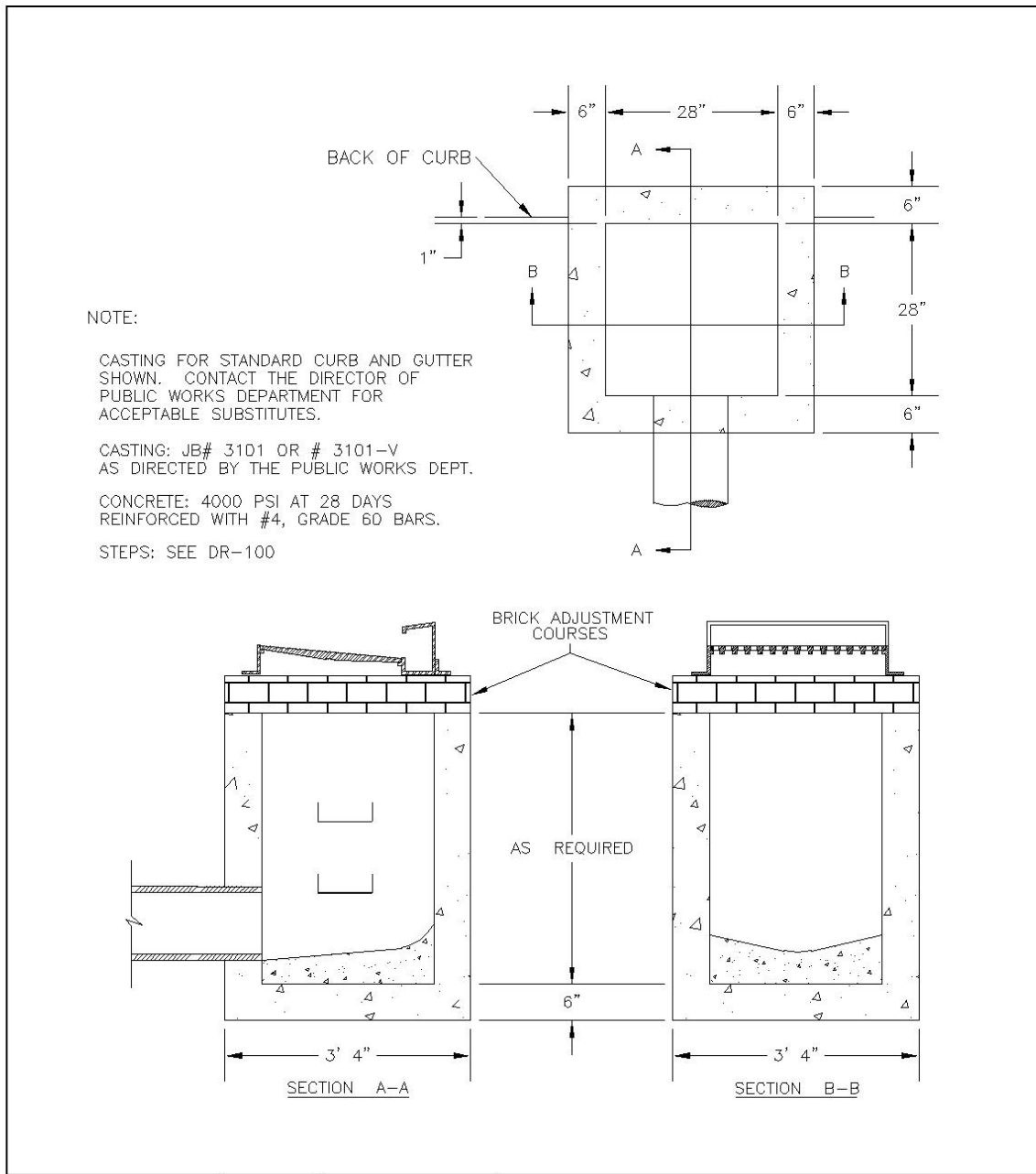
THE CITY OF SPRINGFIELD


DRAWING NUMBER

B-19

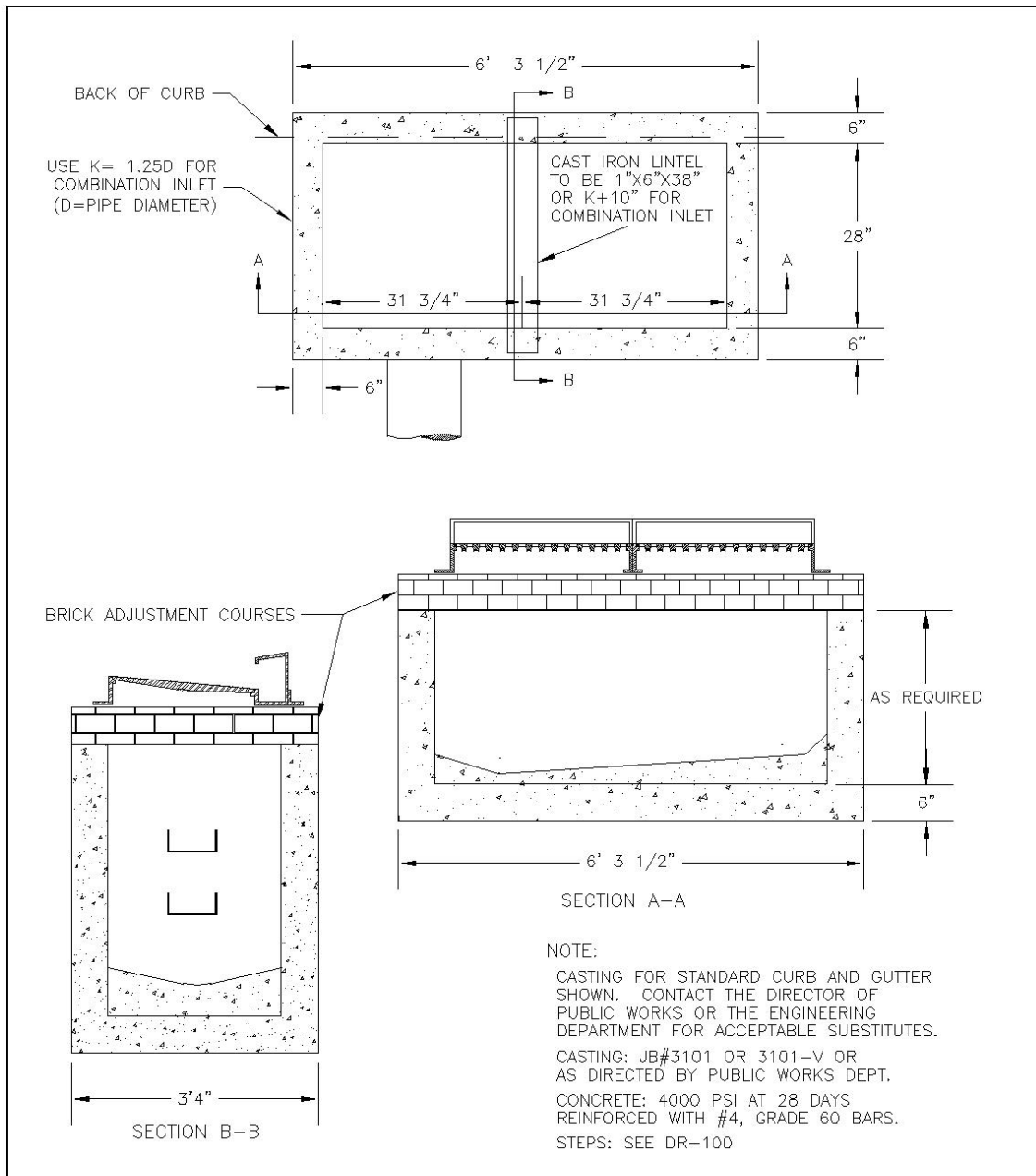
(DR-304A)


**Detail B-20 Single Inlet (Precast)**



REVISION	DATE		SINGLE INLET (PRECAST)	
			THE CITY OF SPRINGFIELD 01-05-07	DRAWING NUMBER B-20 DR-105
APPROVED BY:				
	DATE			

**Detail B-21 Double Inlet (Precast)**



REVISION	DATE		
			
APPROVED BY:		<b>DOUBLE INLET (PRECAST)</b>  <b>THE CITY OF SPRINGFIELD</b>	DRAWING NUMBER B-21 DR-110
_____ DATE		01-05-07	

**Detail B-22 Double Inlet (Precast)**

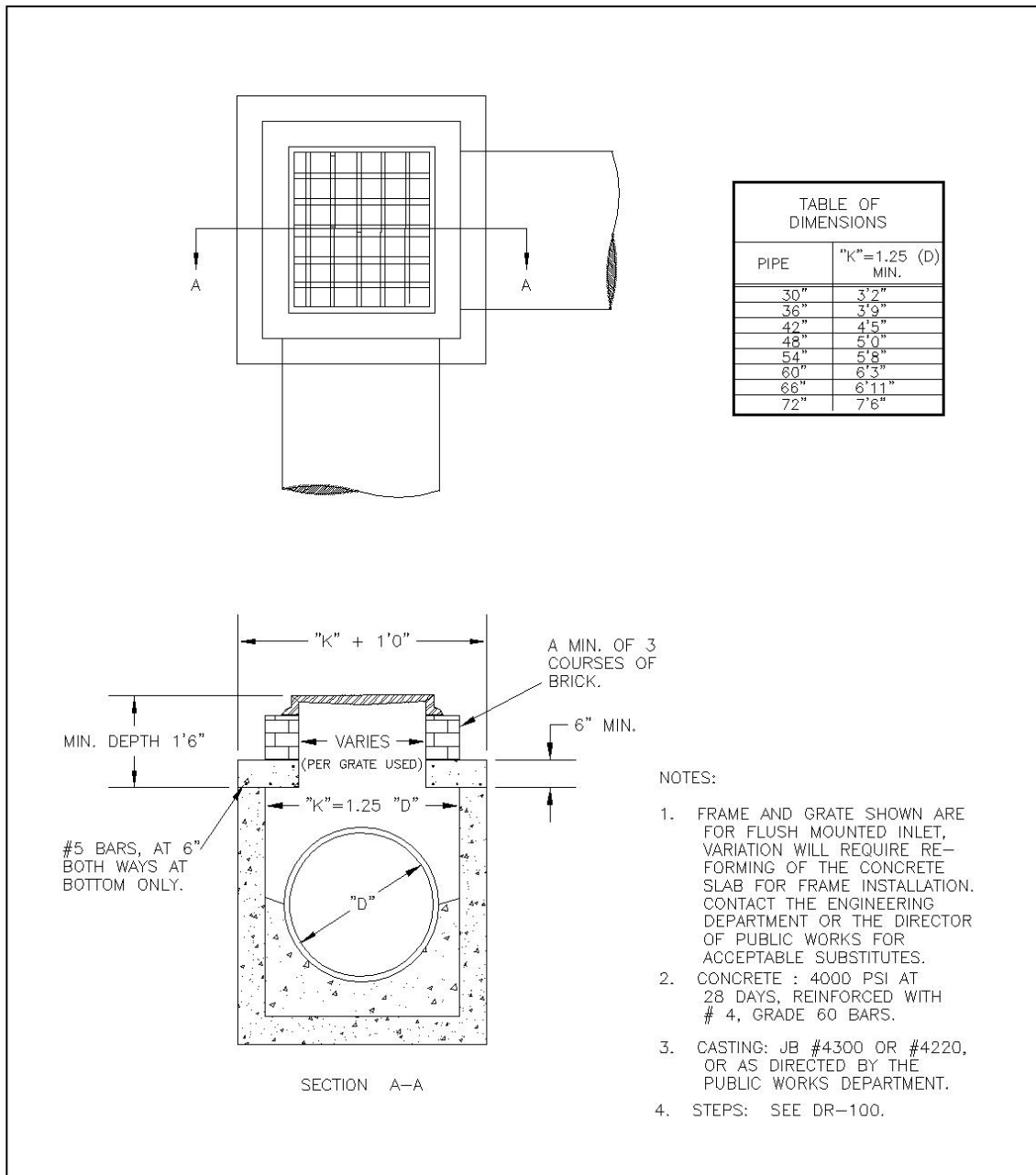

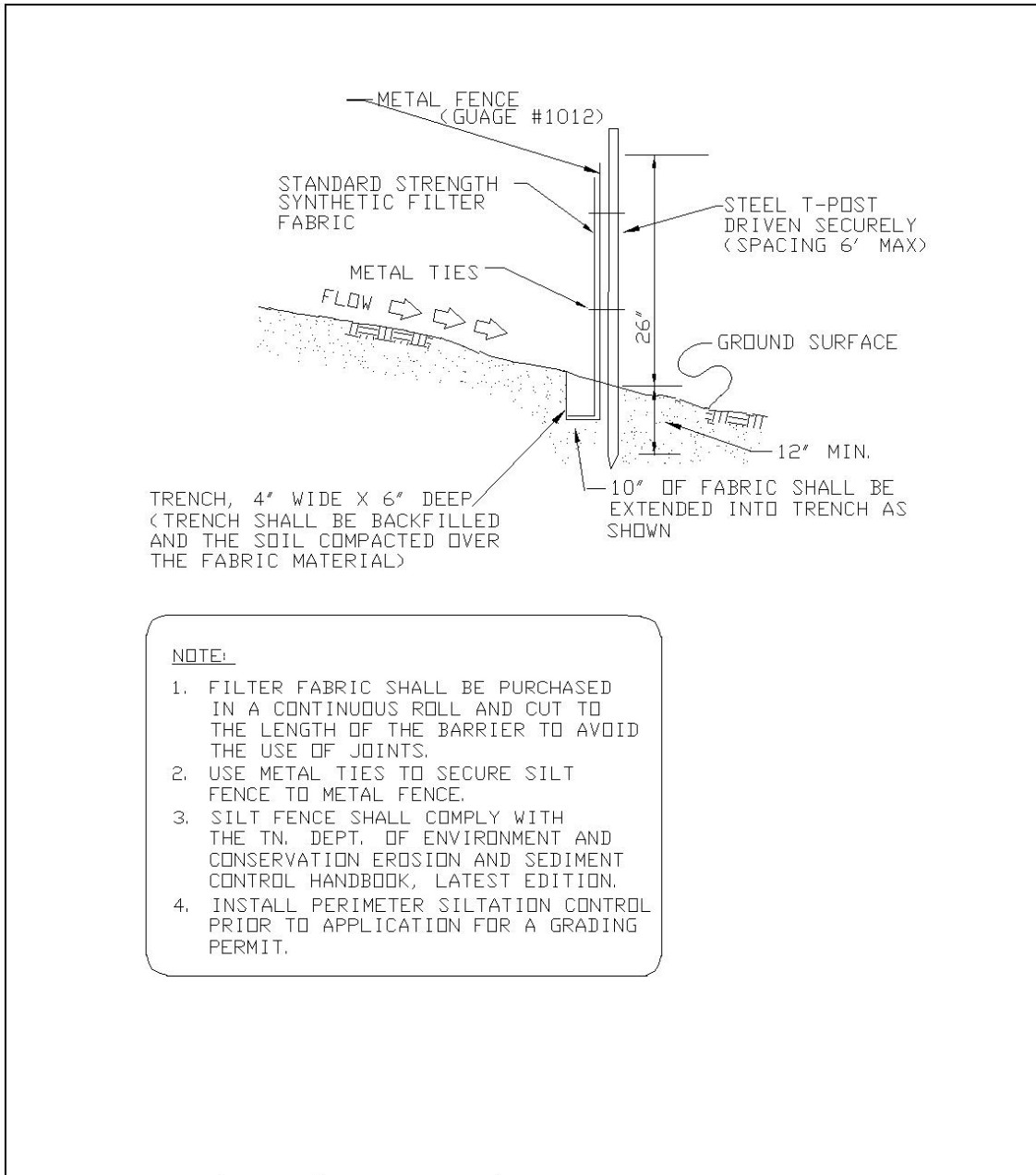


TABLE OF DIMENSIONS	
PIPE	"K" = 1.25 (D) MIN.
30"	3'2"
36"	3'9"
42"	4'5"
48"	5'0"
54"	5'8"
60"	6'3"
66"	6'11"
72"	7'6"


- NOTES:
1. FRAME AND GRATE SHOWN ARE FOR FLUSH MOUNTED INLET, VARIATION WILL REQUIRE RE-FORMING OF THE CONCRETE SLAB FOR FRAME INSTALLATION. CONTACT THE ENGINEERING DEPARTMENT OR THE DIRECTOR OF PUBLIC WORKS FOR ACCEPTABLE SUBSTITUTES.
  2. CONCRETE : 4000 PSI AT 28 DAYS, REINFORCED WITH # 4, GRADE 60 BARS.
  3. CASTING: JB #4300 OR #4220, OR AS DIRECTED BY THE PUBLIC WORKS DEPARTMENT.
  4. STEPS: SEE DR-100.

REVISION	DATE		<b>COMBINATION INLET (PRECAST)</b>	
			<b>THE CITY OF SPRINGFIELD</b> PUBLIC WORKS DEPARTMENT 01-05-07	
				DRAWING NUMBER
				B-22
				DR-120
APPROVED BY:				
_____ DATE				

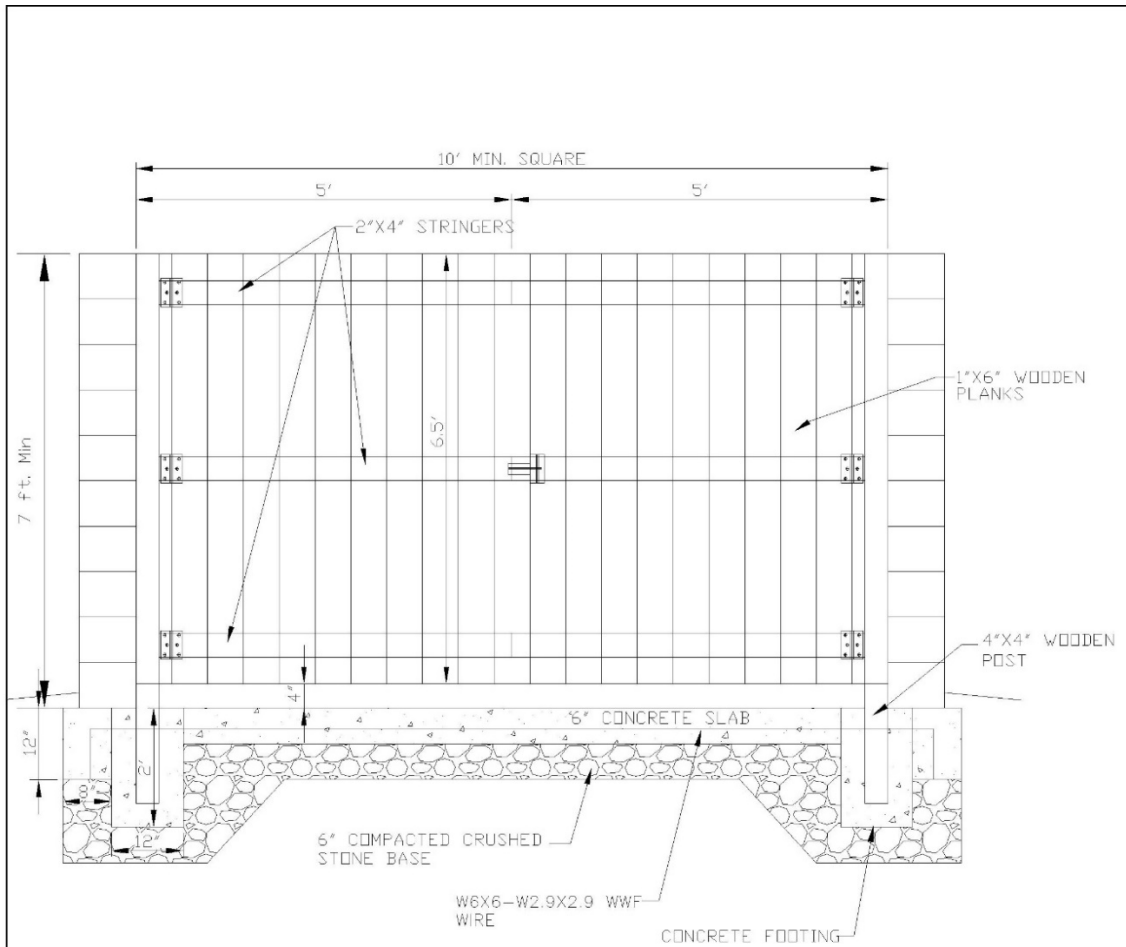
**Detail B-23 Temporary Silt Fence (Steel Post/Wire Back)**



- NOTE:**
1. FILTER FABRIC SHALL BE PURCHASED IN A CONTINUOUS ROLL AND CUT TO THE LENGTH OF THE BARRIER TO AVOID THE USE OF JOINTS.
  2. USE METAL TIES TO SECURE SILT FENCE TO METAL FENCE.
  3. SILT FENCE SHALL COMPLY WITH THE TN. DEPT. OF ENVIRONMENT AND CONSERVATION EROSION AND SEDIMENT CONTROL HANDBOOK, LATEST EDITION.
  4. INSTALL PERIMETER SILTATION CONTROL PRIOR TO APPLICATION FOR A GRADING PERMIT.

REVISION		DATE			<p align="center"><b>TEMPORARY SILT FENCE</b> (Steel Post/ Wire Back)</p>	
#1 Name / DWG Number		10/15/08				
APPROVED BY:				<p align="center"><b>THE CITY OF SPRINGFIELD</b> PUBLIC WORKS DEPARTMENT</p>	DRAWING NUMBER	
ENGINEER		DATE			<p align="center">B-23 ER-400</p>	


**Detail B-24 Dumpster Pad and Enclosure**



**DUMPSTER ENCLOSURE NOTES:**  
 THE FRONT OF THE ENCLOSURE IS TO BE A WOODEN GATE, PAINTED TO MATCH EXTERIOR COLOR ON THE FRONT OF THE BUILDING. THE SIDES AND BACK OF THE ENCLOSURE ARE THE SAME MATERIAL AND APPEARANCE OF THE FACADE OF THE PRINCIPAL STRUCTURE.

**NOTES:**  
 1. ALL LUMBER TO BE PRESSURE TREATED  
 2. CONCRETE PAD WITHIN ENCLOSURE TO BE CLASS "A" CONCRETE (3,500 PSI).

**DUMPSTER PAD & ENCLOSURE DETAIL**  
 NOT TO SCALE

REVISION	DATE		<b>DUMPSTER PAD &amp; ENCLOSURE DETAIL</b>
#1 Name/DWG Number	08/05/11		
#2 Dumpster Notes	07/30/14		
APPROVED BY:	DATE	<b>THE CITY OF SPRINGFIELD</b> PUBLIC WORKS DEPARTMENT	DRAWING NUMBER B-24 (DR-1005)