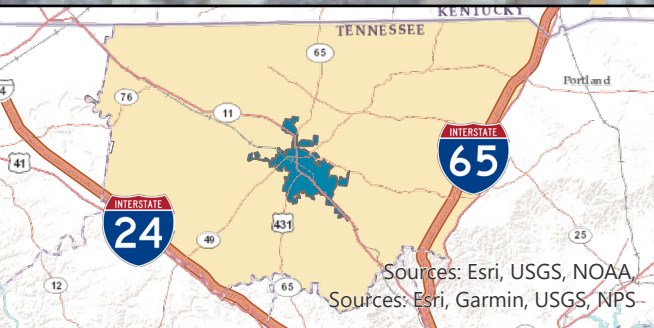
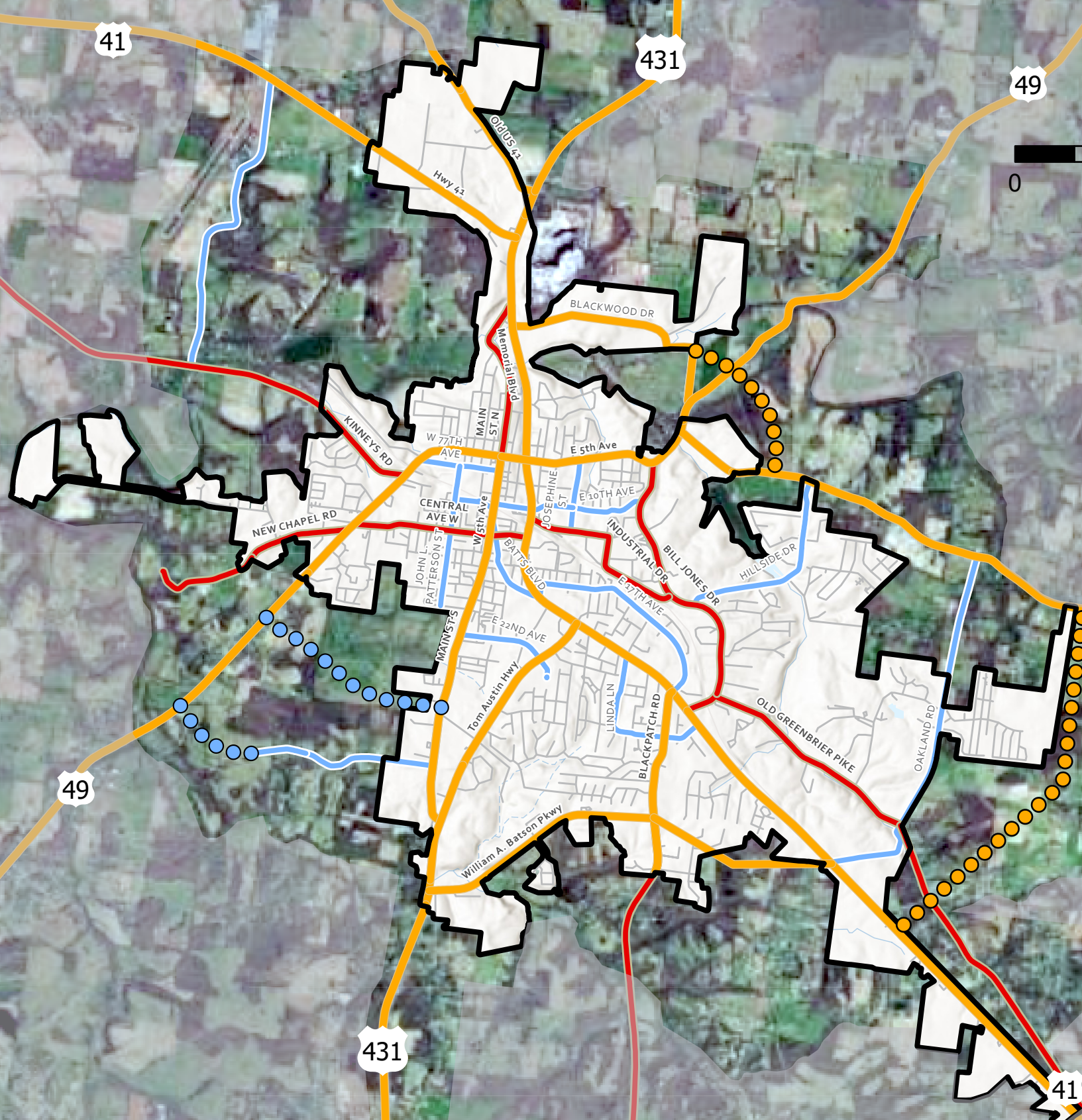
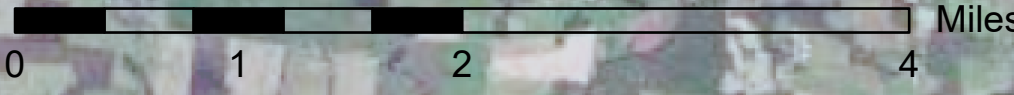


MAJOR THOROUGHFARE PLAN 2030 SPRINGFIELD PLANNING REGION



Legend

- City Boundary
- Major Arterial
- Minor Arterial
- Collector
- Future Major Arterial
- Future Collector

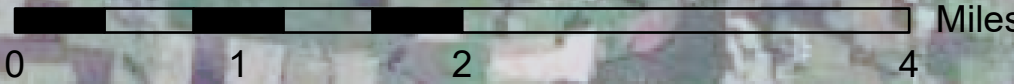


Esri, NASA, NGA, USGS, FEMA, Esri, TomTom, Garmin, SafeGraph, GeoTechnologies, Inc, METI/NASA, USGS, EPA, NPS, USDA, USFWS

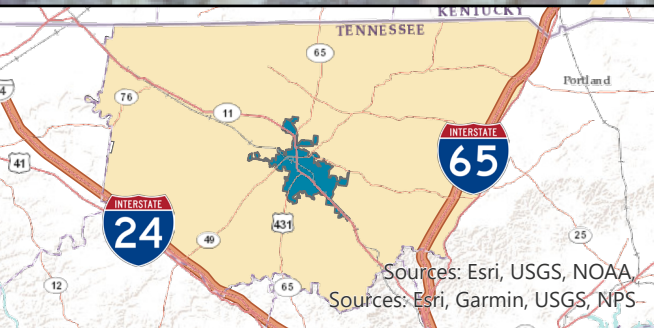
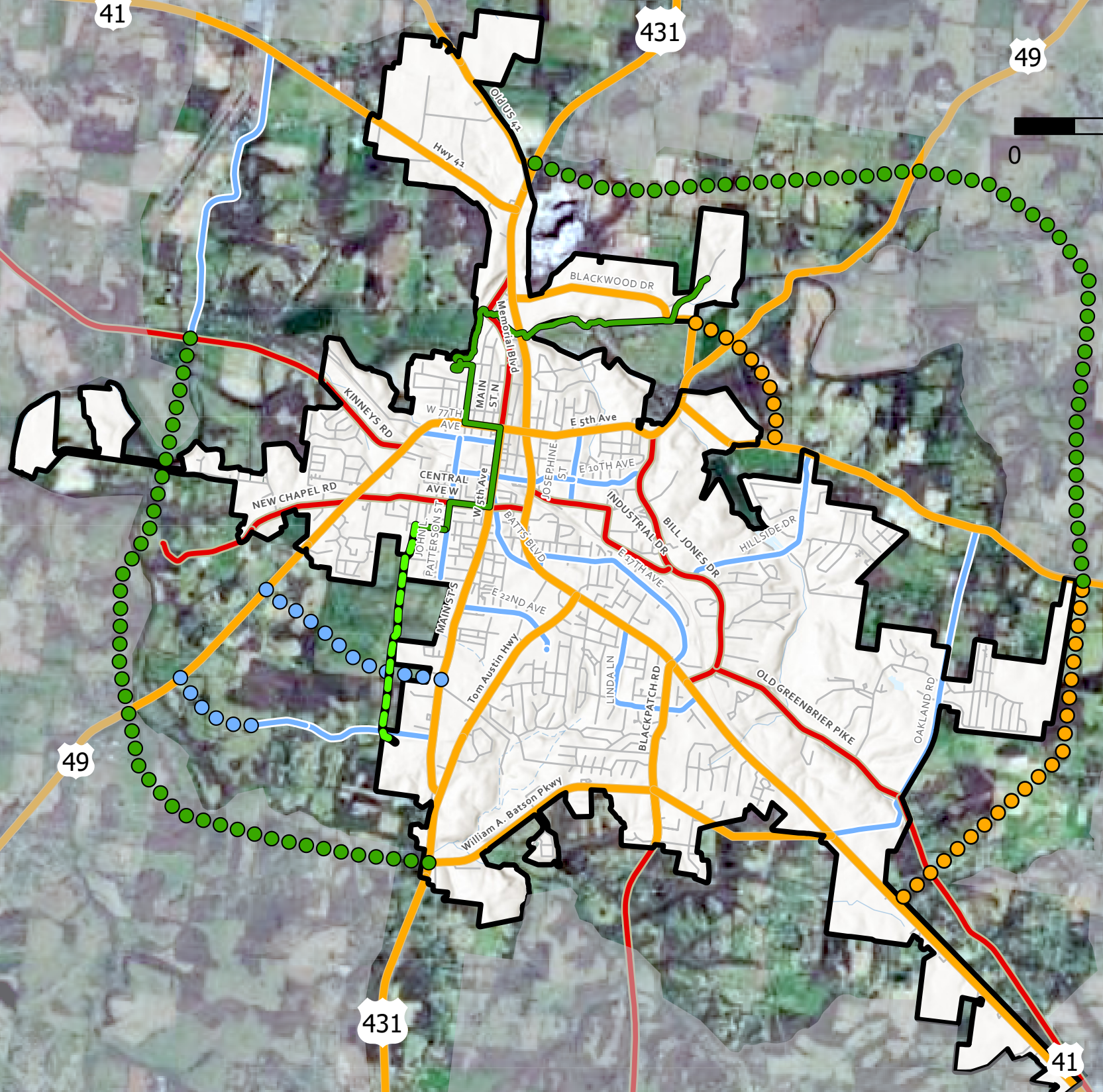
MAJOR THOROUGHFARE PLAN 2044 SPRINGFIELD PLANNING REGION

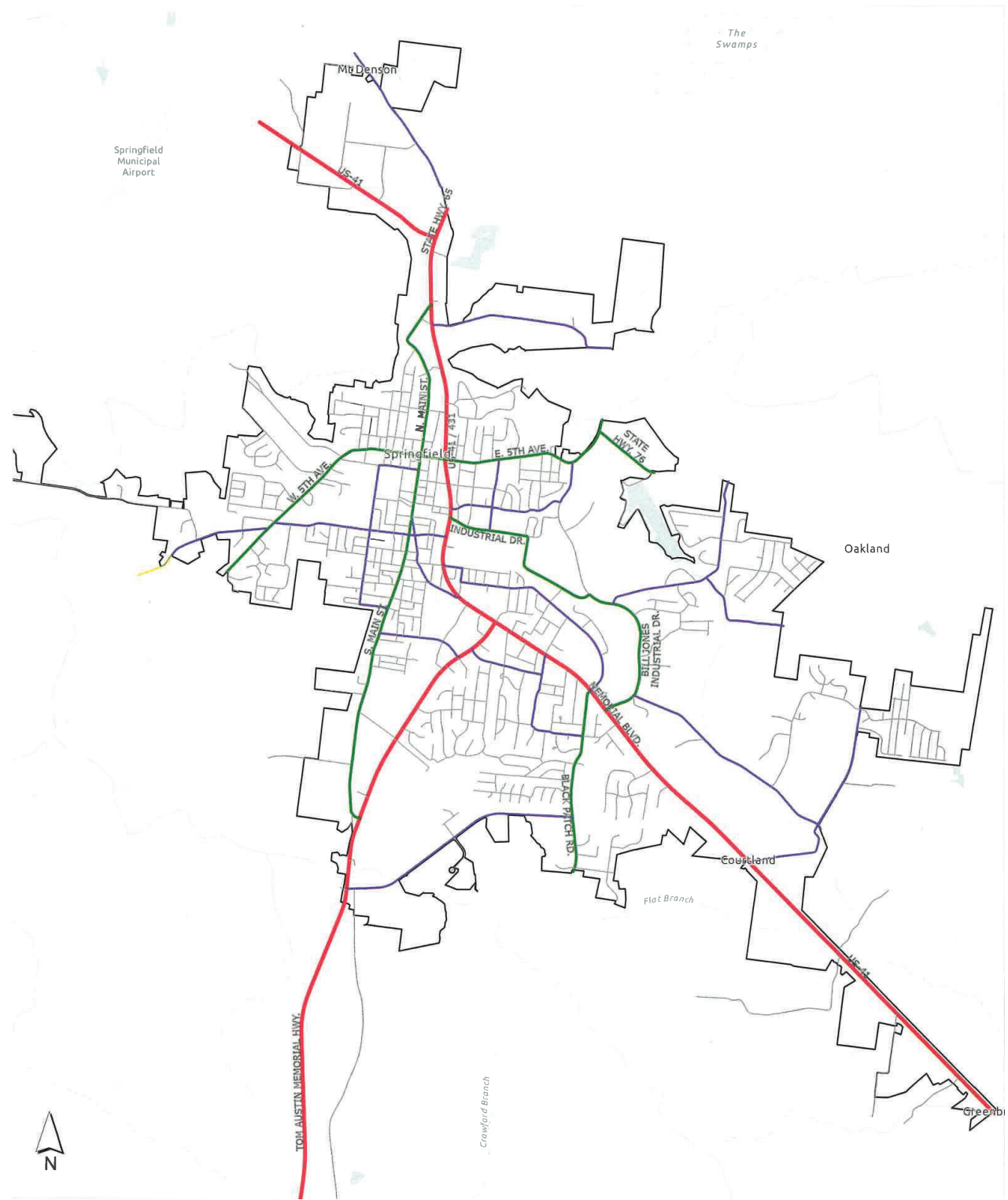


N



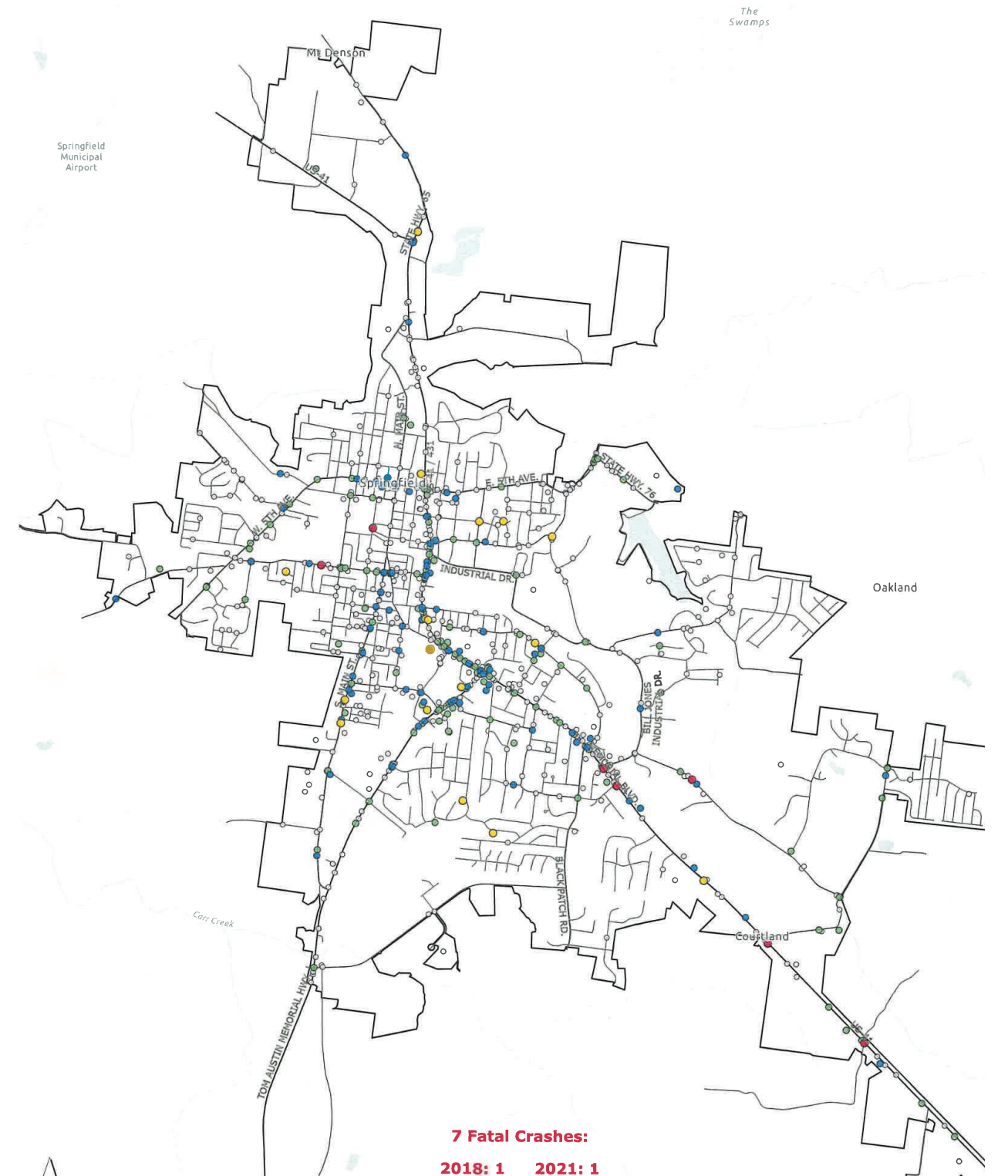
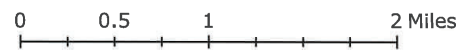
- Legend**
- City Boundary
 - Major Arterial
 - Minor Arterial
 - Collector
 - Future Major Arterial
 - Future Collector
 - Potential Long Range Connector
 - Current Greenway
 - Proposed Greenway





Springfield Roads
Functional Classification

- Other Principle Arterial
- Minor Arterial
- Major Collector
- Minor Collector
- Local
- Springfield City Boundary



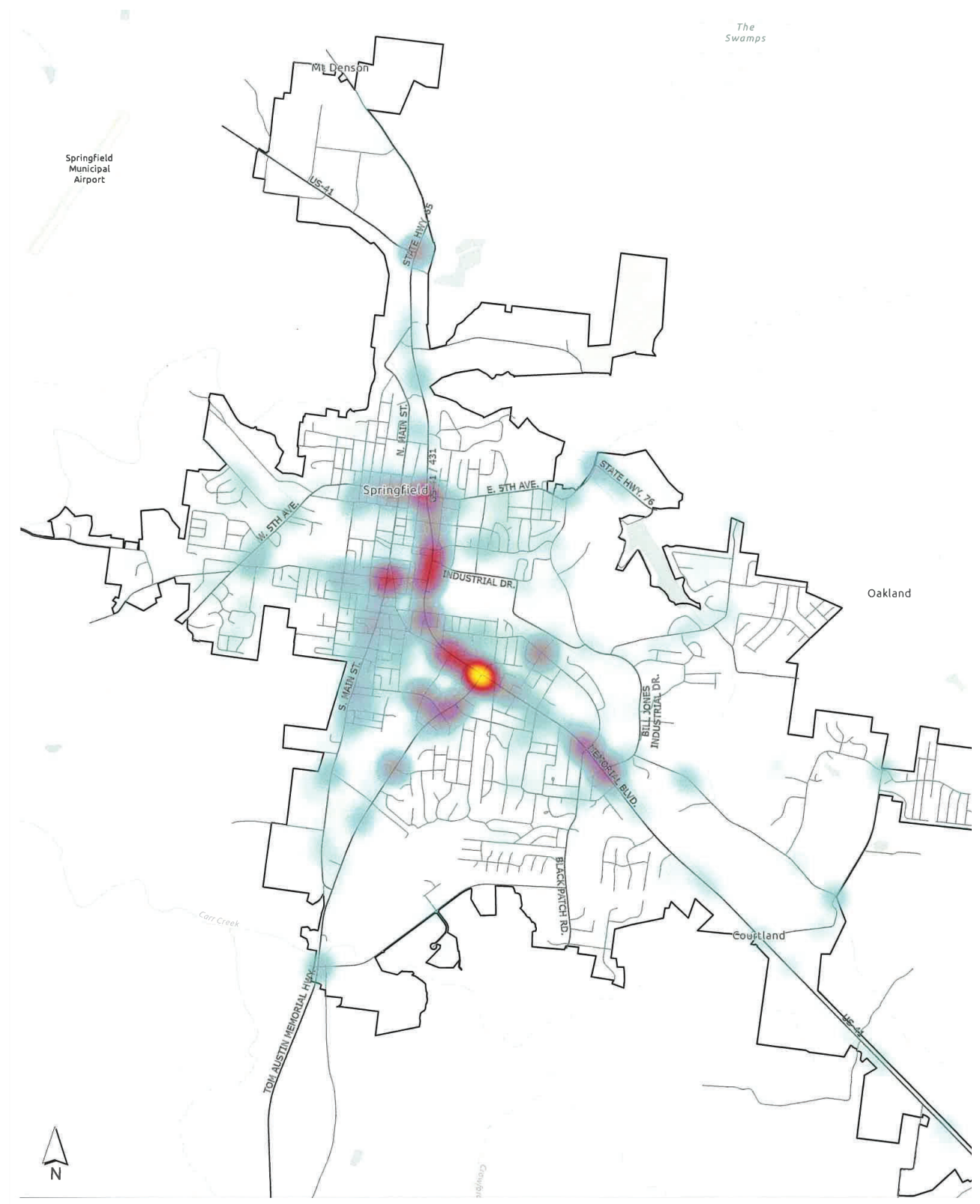
7 Fatal Crashes:

2018: 1	2021: 1
2019: 0	2022: 3
2020: 2	2023: 0

Crash by Type (2018-2023)

- Fatal Injury
- Suspected Serious Injury
- Suspected Minor Injury
- Possible Injury
- Property-Damage Only
- Springfield City Boundary





Crash Density (2018-2023)

- Sparse
- Dense
- Springfield City Boundary

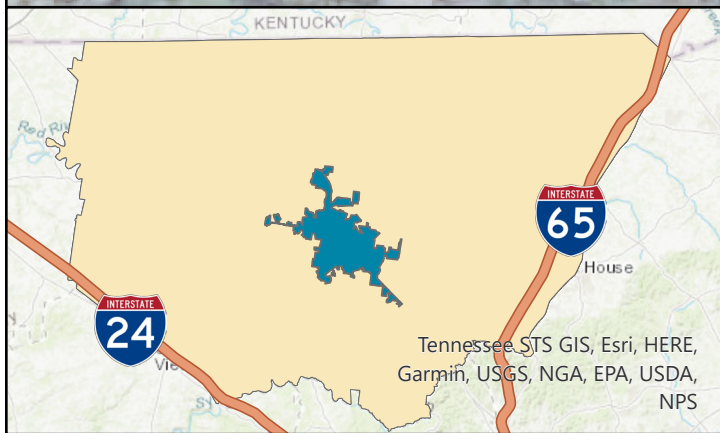
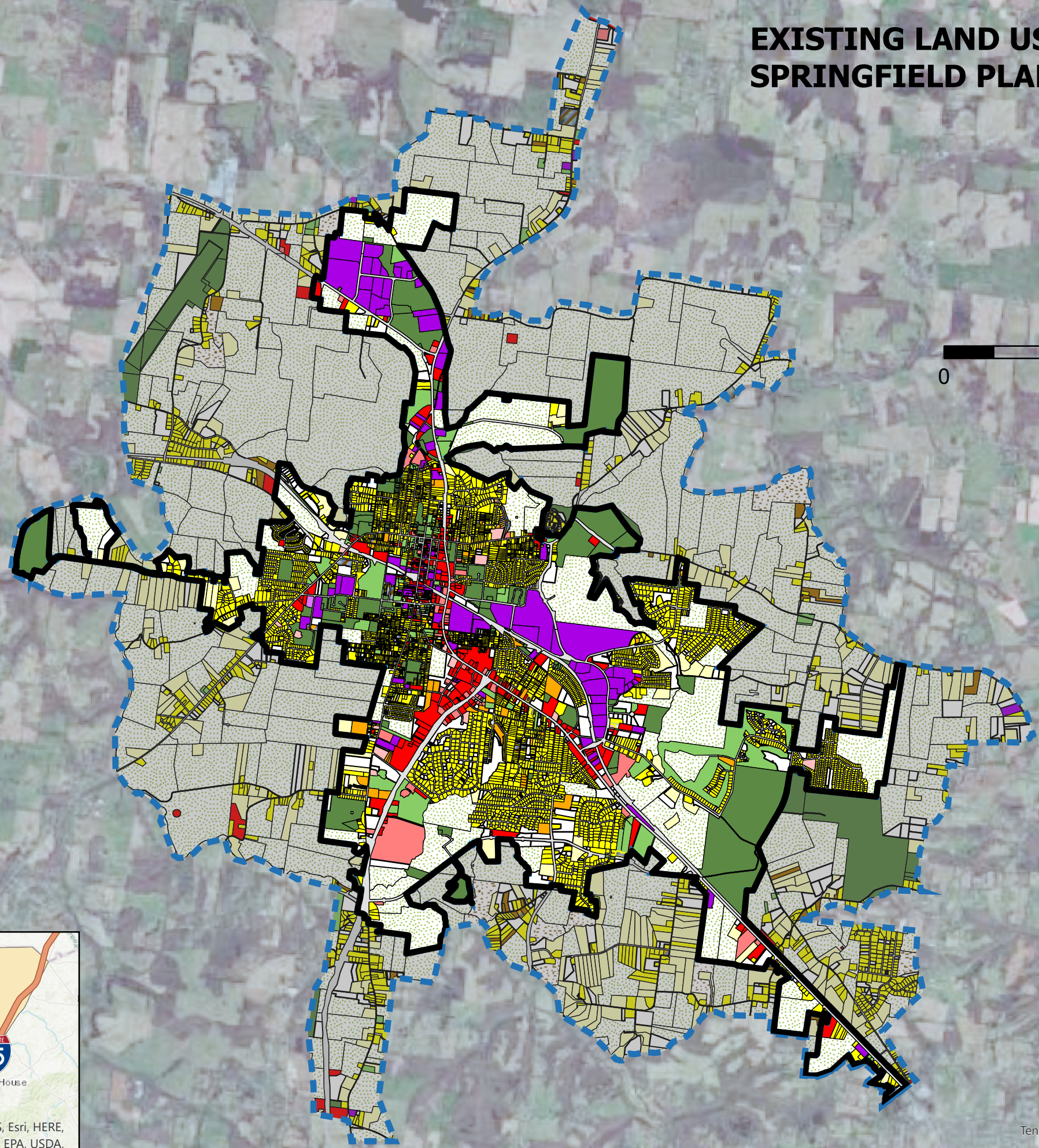
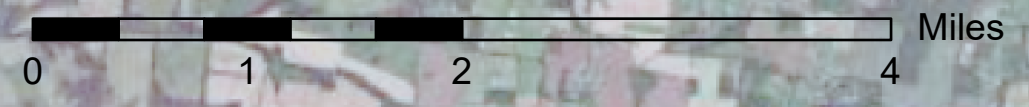


Legend

- City Boundary
- Urban Growth Boundary

- | | |
|--------------------------------|---------------------------------------|
| SFR < 5 acres | Public Use |
| SFR >= 5 acres | Semi-Public Use |
| Duplex (2 units) | Utilities |
| Multifamily (3 or more units) | Vacant |
| Mobile Home (1-4) | Agricultural Tract |
| Mobile Home Park (5 or more) | Timber Tract |
| Resort Residential | Water Feature |
| General Commercial | Road/Rail ROW |
| Office (Prof/Medical/Gen) | Unclassified improvements < \$30,000 |
| Misc Commercial | Unclassified improvements >= \$30,000 |
| Light Industrial / Warehousing | CAAS data unavailable for Parcel |
| Heavy Industrial | Uncoded by Land Use Model |

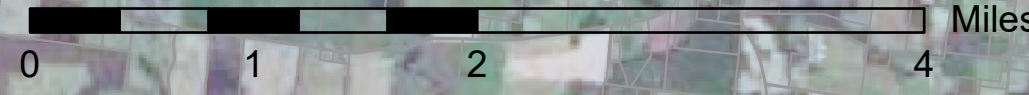
EXISTING LAND USE PLAN SPRINGFIELD PLANNING REGION



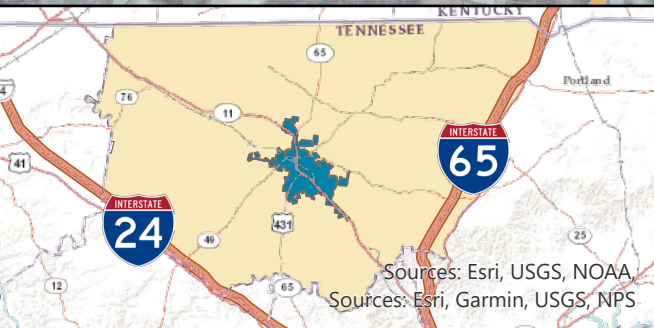
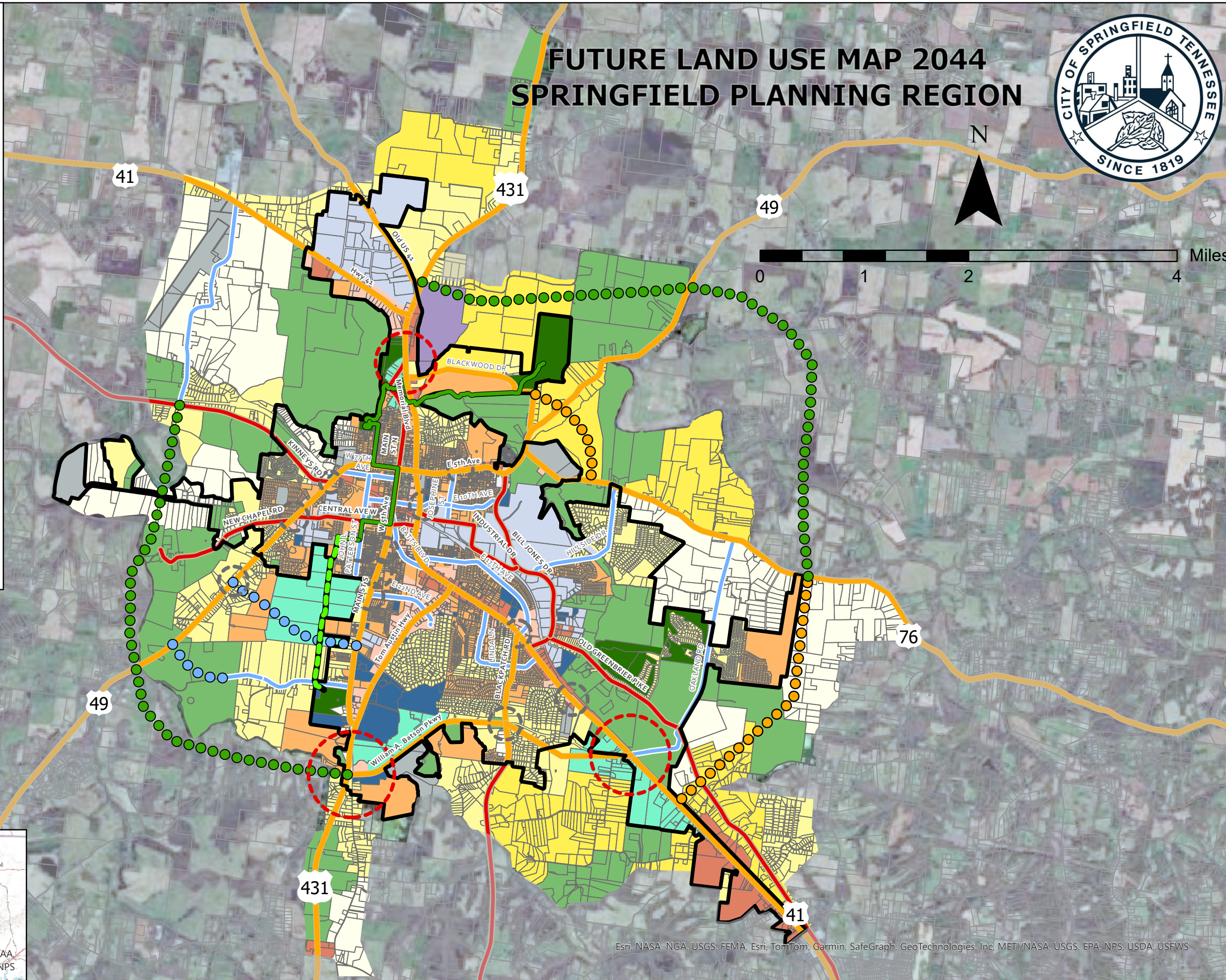
Tennessee STS GIS, Esri, HERE, Garmin, USGS, NGA, EPA, USDA, NPS

Tennessee STS GIS, Esri, HERE, Garmin, INCREMENT P, USGS, METI/NASA, EPA, USDA

FUTURE LAND USE MAP 2044 SPRINGFIELD PLANNING REGION



- Legend**
- City Boundary
 - Major Arterial
 - Minor Arterial
 - Collector
 - Future Major Arterial
 - Future Collector
 - Potential Long Range Connector
- FLU**
- Agriculture / Undeveloped Rural
 - Business & Medical Office Park
 - Commercial Core Commercial
 - General Commercial Character
 - High-Density Residential
 - Light Industrial
 - Low Density Residential Suburban Estate Character
 - Medium-Density Residential
 - Mixed-Use Center
 - Neighborhood Commercial
 - Park or Greenway
 - Heavy Industrial
 - Suburban & Cluster Residential
 - Educational Campus / Institutional
 - Current Greenway
 - Proposed Greenway
 - Neighborhood Commercial Crossroads
 - Mixed-Use CrossRoads/ Center

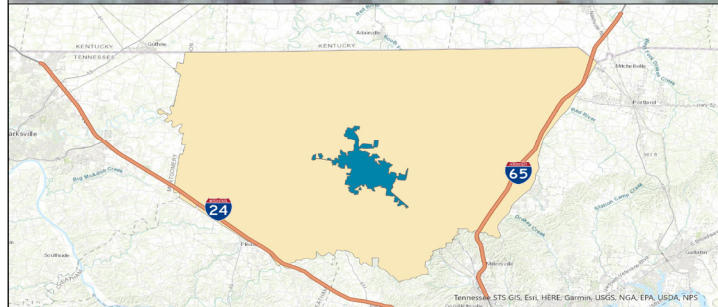
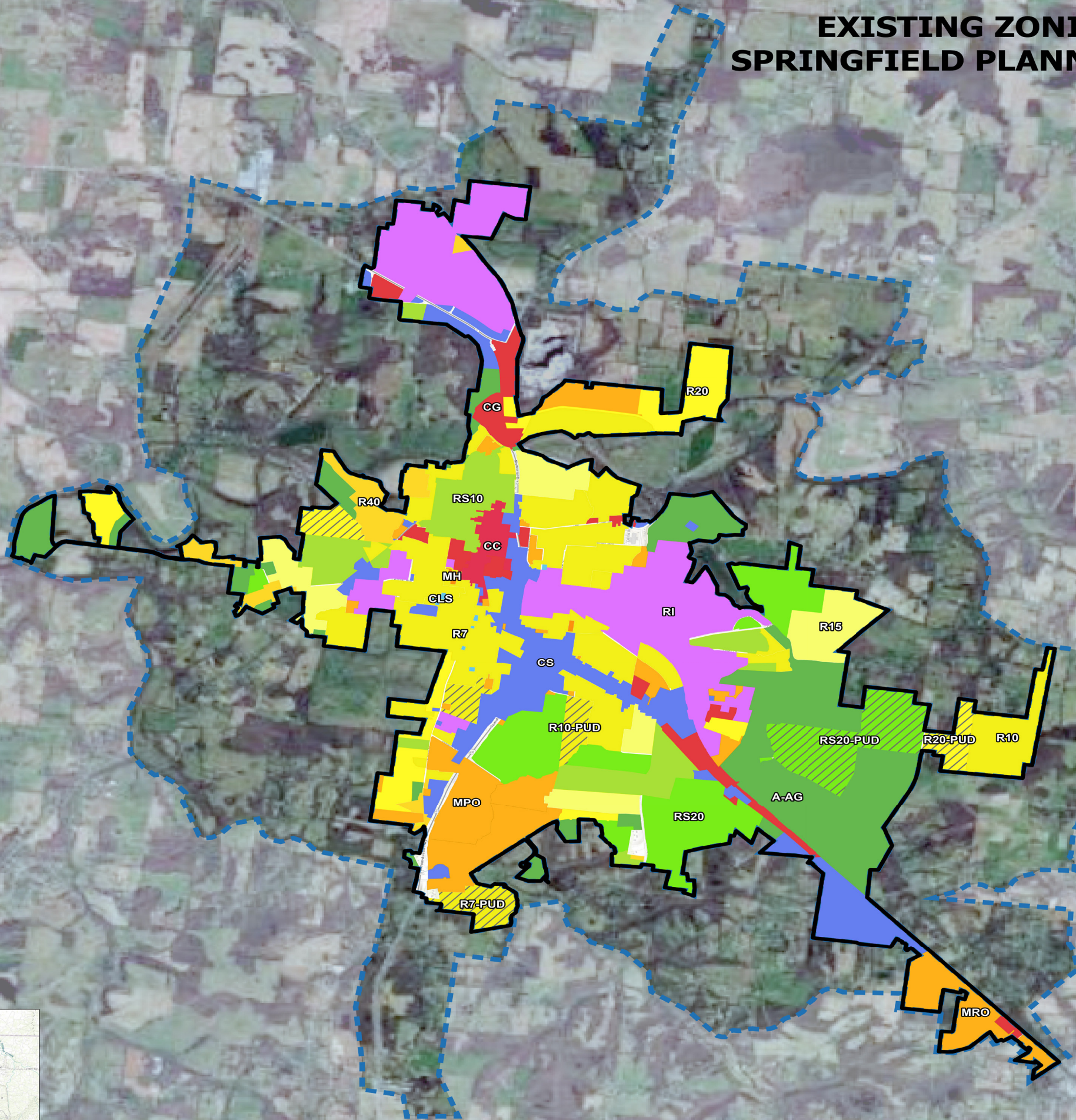




EXISTING ZONING MAP SPRINGFIELD PLANNING REGION



- Legend**
- County
 - Urban Growth Boundary
 - City Boundary
 - Zoning**
 - A-AG
 - CC
 - CG
 - CLS
 - CS
 - MH
 - MPO
 - MRO
 - R7
 - R7-PUD
 - R10
 - R10-PUD
 - R15
 - R20
 - R20-PUD
 - R40
 - RI
 - RS10
 - RS20
 - RS20-PUD



Number	Project Name	Units	Description
2	Jones Village	46	Single-Family Homes
3	Bill Jones TH	58	Townhomes
4	901 South Main Condos	23	condos - apart of number #4
5	22nd Ave TH	24	condos - apart of number #3
6	23rd Ave TH	39	Townhomes - apart of number 6,7
7	24th Ave TH	39	Townhomes - apart of number 5,7
8	Memorial Mansion TH	55	Townhomes - apart of number 5,6
9	Welch Commerical Sub	55	55 townhomes, 1 commercial
10	Lahr Road TH	49	apart of number 17,25
11	Legacy, sec 6	73	Condos & strip center
12	Harvest Park - Comm	73	single-family homes
13	Harvest Park - Res	240	commercial apart of #30
14	Austin Farms - Comm	1	apartments
15	Austin Farms - Comm	1	commercial restaurant
16	Spring View Village	414	312 Apts, 72 Townhomes, 30 cottages
17	Blackwood South	238	Single-Family Homes
18	Welch Commerical Sub	55	apart of number 9,25
19	Jasper Fields	125	single-Family Homes
20	Highland Estates	148	94 single-family & 54 Townhomes
21	Jasper Fields	148	apart of #18
22	Vesper Village	3000	Mixed use 3k res plus comm. Specific Plan District - apart of #'s 22,23,24,21,32
23	Vesper Village	3000	Specific Plan District - apart of #'s 21,23,24,31,32
24	Vesper Village	3000	Specific Plan District - apart of #'s 22,21,24,31,32
25	Vesper Village	3000	Specific Plan District - apart of #'s 22,23,21,31,32
26	Welch Commerical Sub	55	apart of #'s 9,17
27	17th Ave TH	97	Townhomes - apart of # 27
28	17th Ave TH	97	apart of # 26
29	Autumnwood, sec3	16	single-family
30	Flats at Mooreland	76	apartments
31	Harvest Park - Res	193	Condos
32	Vesper Village	3000	Specific Plan District - apart of #'s 22,23,24,21,32
33	Vesper Village	3000	Specific Plan District - apart of #'s 22,23,24,31,21
34	Blackwood North	238	apart of # 36 -other half of land no plans proposed
35	Shops of Mooreland	76	Commercial retail shops
36	Harvest Park - Comm	76	commercial apart of #12
37	Blackwood North	210	132 Single-Family & 78 Townhomes - MRO
38	Algremont	1	Rezono to Restrictive Industrial - located in Industrial Park
39	Marker Table	1	Commercial - RI - 12k sqft building
40	Willow St Condos	8	condos
41	Dollar General	1	commercial - 13k sqft building
42	Head TH	12	Townhomes
43	Prime Trucking & Excav	1	Restrictive Industrial - 5k sqft building
44	Continental TH	12	Townhomes
45	South Main TH	20	Townhomes
46	Milan Retail	5	Strip center - 8k sqft building
47	Black Patch Retail	5	Strip center - 7,5k sqft building
48	Woolen Mills	1	Redevelopment
49	Chick-fil-A	1	new developed area - 5k sqft building
50	Bransford Center	1	Community center - 9k sqft building
51	Cheatham St TH	3	Townhomes
52	Hwy 41N Mini Storage	6	4 acres 69k sqft buildings
53	Black Patch Sub	49	single-family
54	Carver Construction	5000	commercial - 5000 sqft building
55	Summit View	61	Mixed use residential PUD

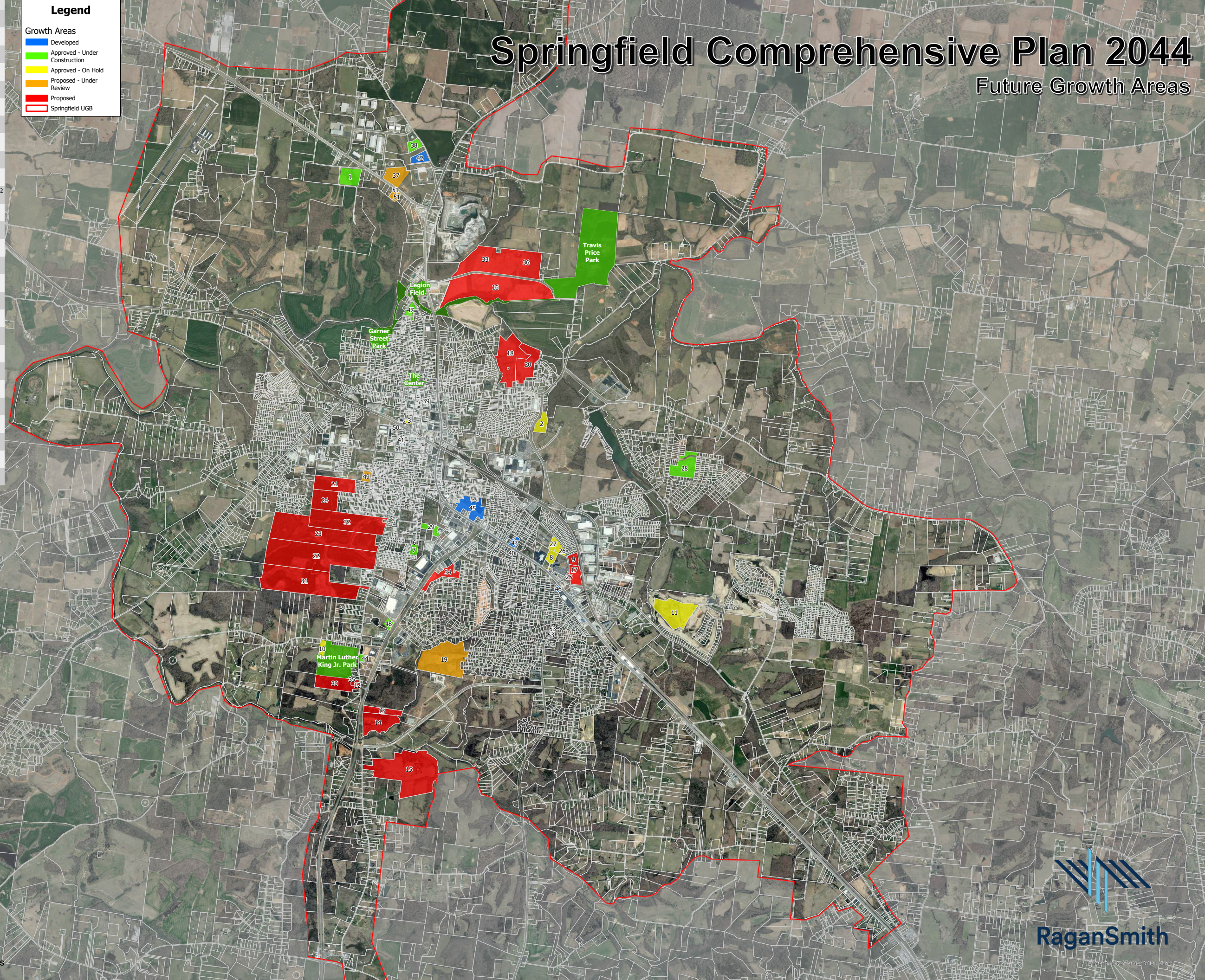
Legend

Growth Areas

- Developed
- Approved - Under Construction
- Approved - On Hold
- Proposed - Under Review
- Proposed
- Springfield UGB

Springfield Comprehensive Plan 2044

Future Growth Areas



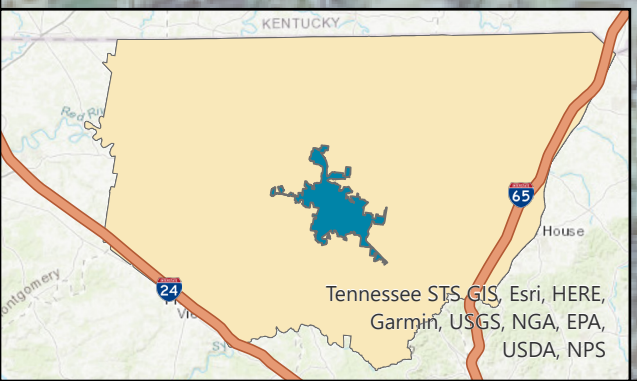
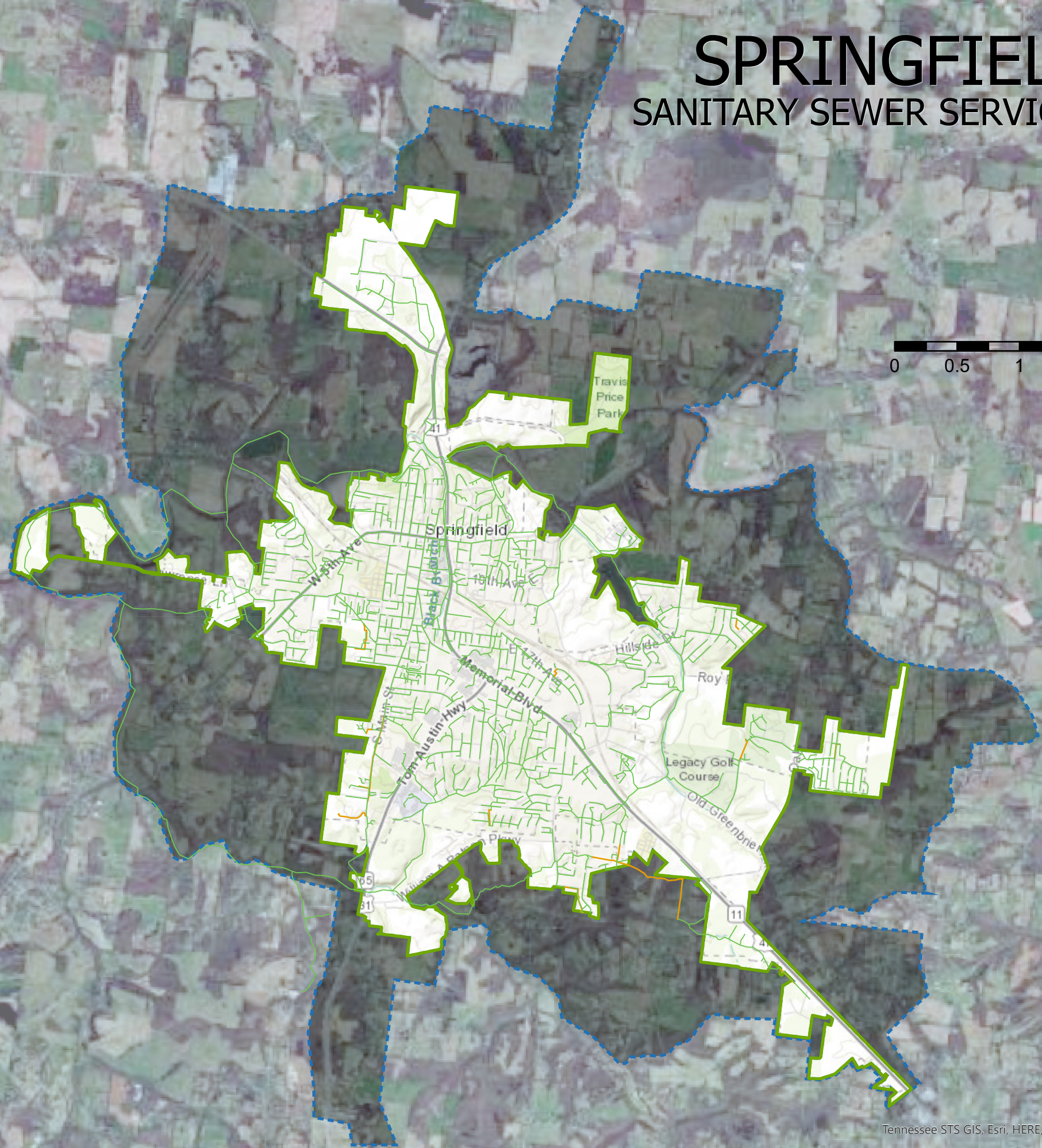
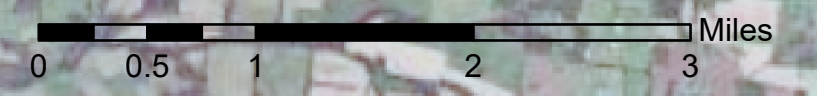
Legend

- Gravity Sewer
- Force Main
- City Boundary
- Urban Growth Boundary



SPRINGFIELD

SANITARY SEWER SERVICE MAP



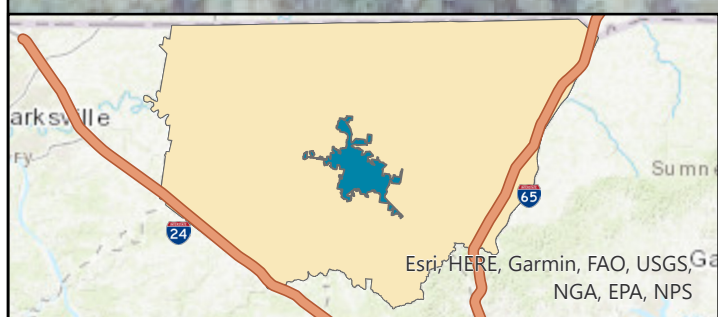
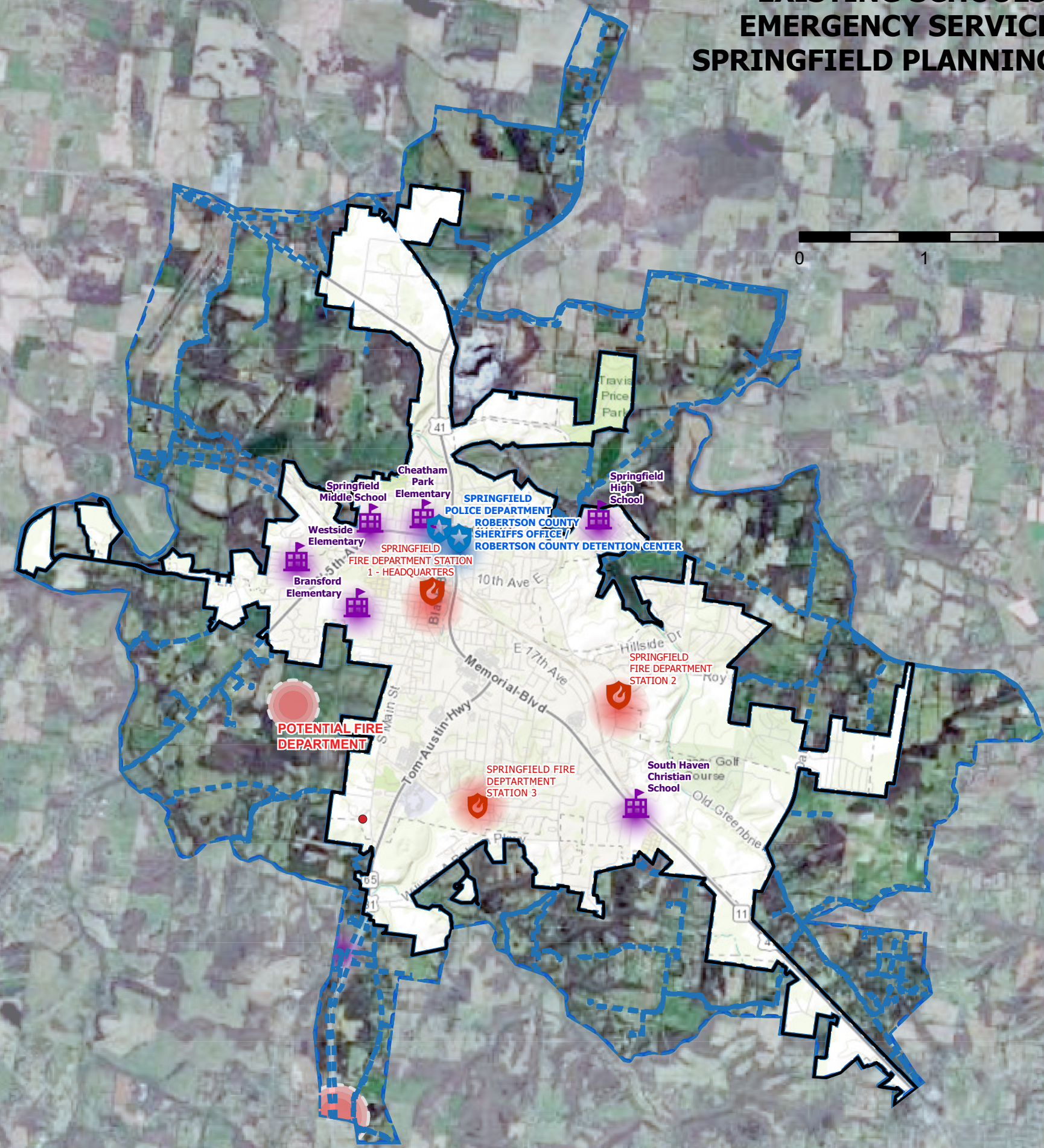
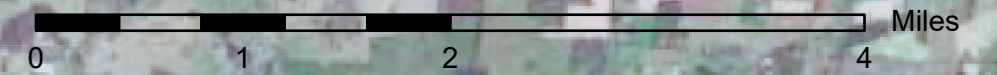
Legend

- City Boundary
- Urban Growth Boundary
- Police Stations
- Fire Stations
- Schools

Location

- Fire
- Police
- Potential Fire Station
- School

EXISTING SCHOOLS AND EMERGENCY SERVICES MAP SPRINGFIELD PLANNING REGION

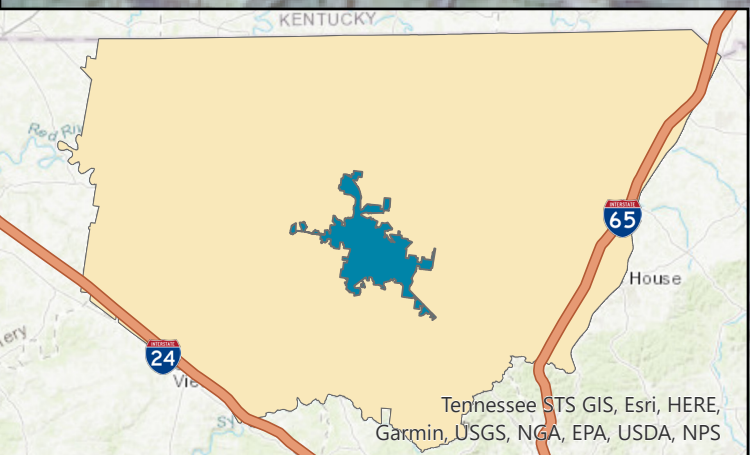
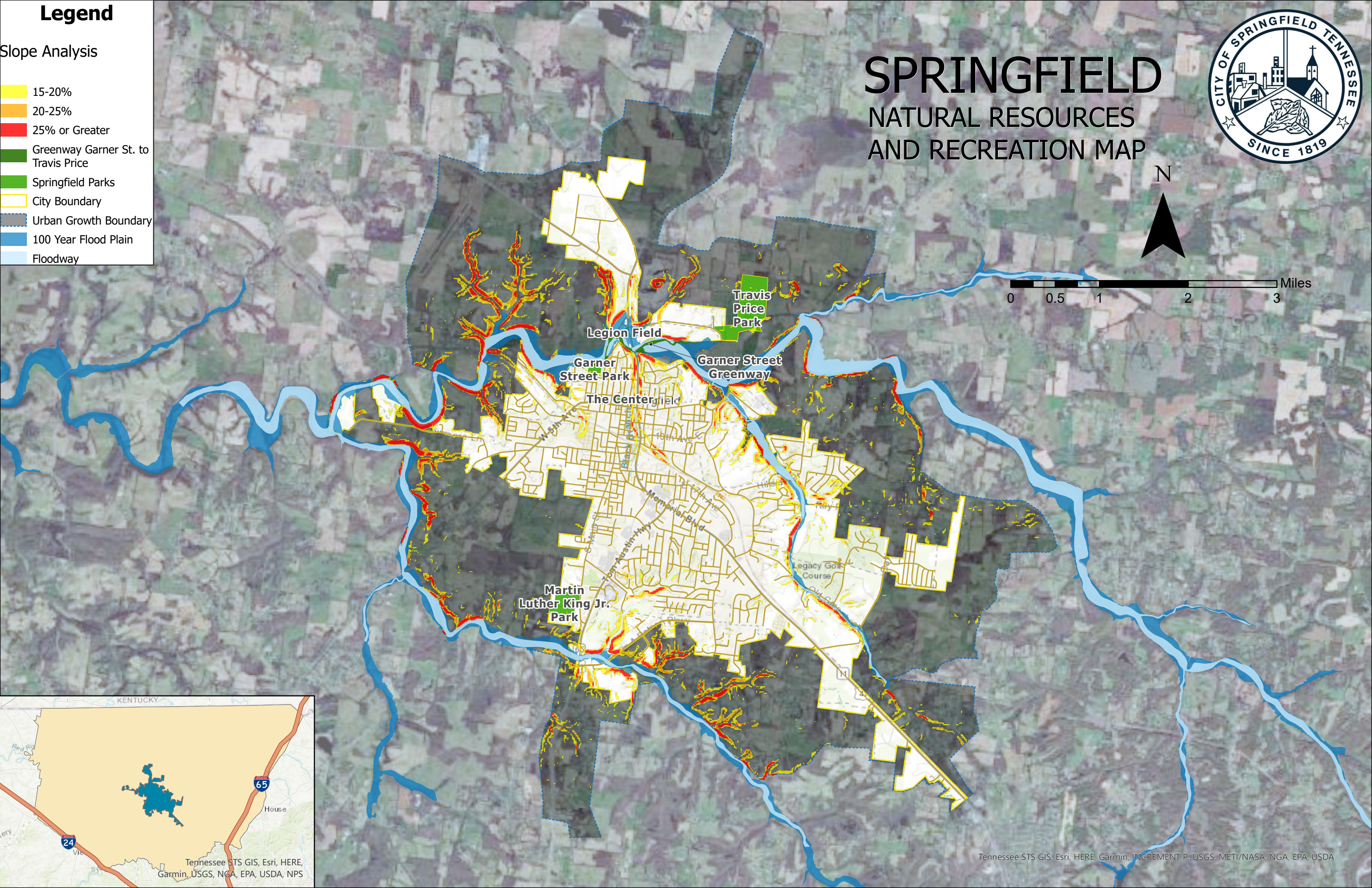
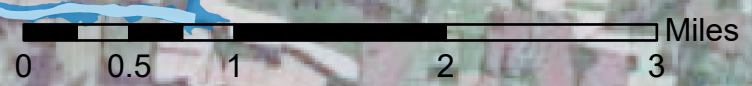


Legend

- 15-20%
- 20-25%
- 25% or Greater
- Greenway Garner St. to Travis Price
- Springfield Parks
- City Boundary
- Urban Growth Boundary
- 100 Year Flood Plain
- Floodway



SPRINGFIELD NATURAL RESOURCES AND RECREATION MAP



Tennessee STS GIS, Esri, HERE, Garmin, USGS, NGA, EPA, USDA, NPS

Tennessee STS GIS, Esri, HERE, Garmin, INCREMENT P, USGS, METI/NASA, NGA, EPA, USDA

