

**PLANNING COMMISSION RESOLUTION 24-01**

**A RESOLUTION AMENDING THE SPRINGFIELD MUNICIPAL/REGIONAL PLANNING COMMISSION SUBDIVISION REGULATIONS.**

**WHEREAS**, the Springfield Municipal/Regional Planning Commission wishes to ensure that all future subdivisions add value to the city and county; and

**WHEREAS**, pursuant to the authority and powers granted to the Springfield Municipal/Regional Planning Commission by section 13-3-403, Tennessee Code Annotated, to adopt and amend subdivision regulations; and

**WHEREAS**, the Springfield Municipal/Regional Planning Commission having held a public hearing as required by section 13-3-403, Tennessee Code Annotated to amend the subdivision regulations; and

**WHEREAS**, the Springfield Municipal/Regional Planning Commission wish to amend the subdivision regulations for subdivision development within the city limits of Springfield, and the Springfield, Tennessee planning region as shown on "Exhibit A" attached.

**NOW, THEREFORE, BE IT RESOLVED** by the Springfield Municipal/Regional Planning Commission as follows:

**Section 1.** The subdivision regulations within the city limits of Springfield, and the Springfield, Tennessee planning region shall be amended as shown on "Exhibit A" attached.

Adopted this 7<sup>th</sup> day of March, 2024



David Allen, Chairman

Attest:



David L. Brewer P.E., City Engineer

## PLANNING COMMISSION RESOLUTION 24-01

### EXHIBIT A

#### ROADWAY PAVEMENT

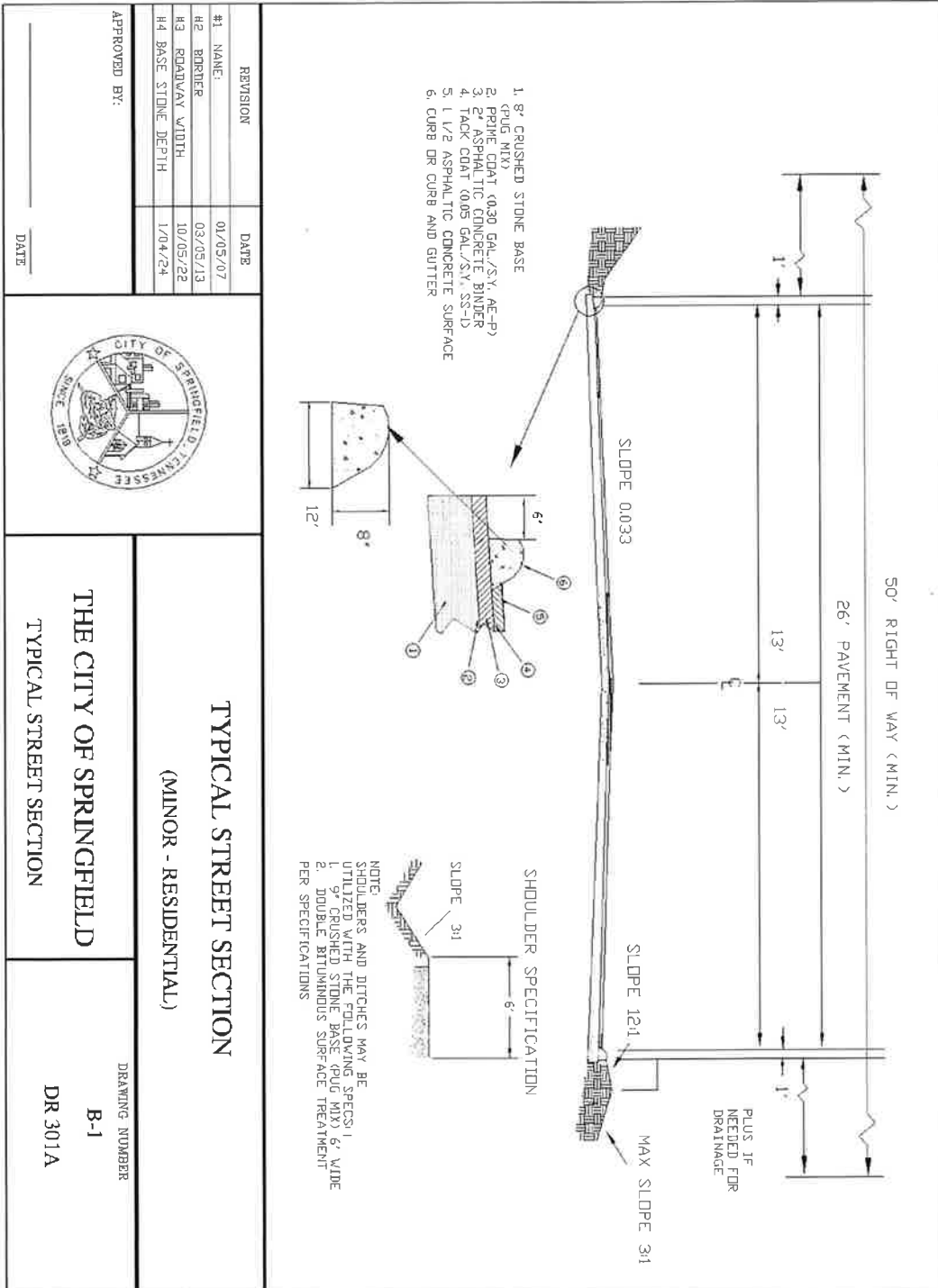
##### AP 1-3 BASE CONSTRUCTION:

This work shall consist of furnishing and placing one (1) or more courses of crushed lime base materials, pug mill mix, on a prepared subgrade in accordance with Division II, Part II, Base and Subgrade Treatments and Part III, Flexible Surfaces, TDOT STANDARD SPECIFICATIONS and in reasonably close conformity with the lines, grades and typical sections shown in the construction plans or as directed by the SPWD. **Local streets** shall have a compacted base course of a minimum of eight (8) inches thick (ten (10) inches for a collector) and a width four (4) feet wider than the final application of asphalt pavement. **Non-residential streets** shall have a compacted base course of a minimum of ten (10) inches thick and a width six (6) feet wider than the final application of asphalt pavement. The type of base stone to be placed on roads and streets shall be a crushed limestone TDOT, Type A, Grading "D" as specified under Section 303, TDOT STANDARD SPECIFICATIONS. See Detail.

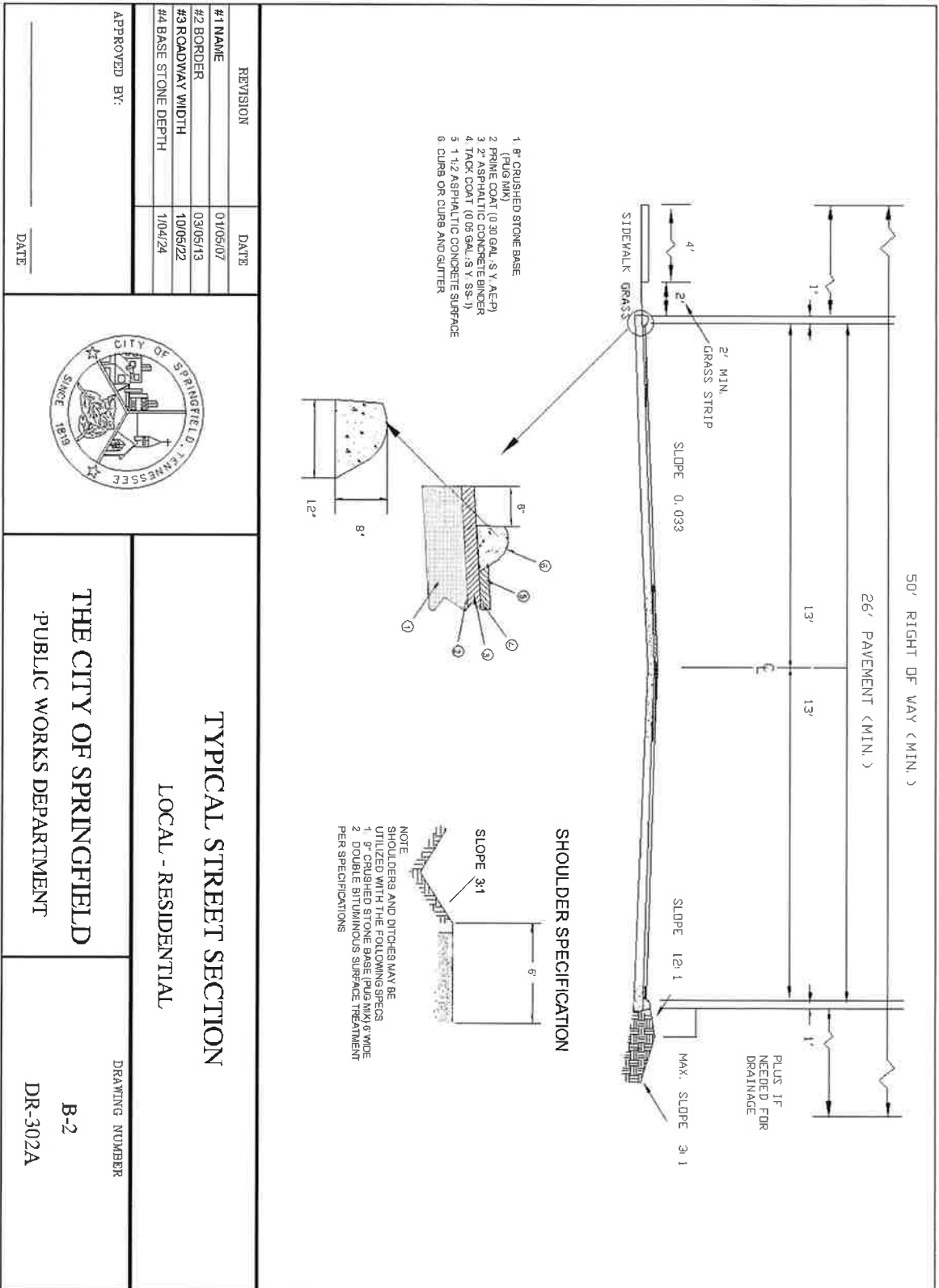
- AP 1-3.1 The centerline of the roadway shall coincide with the centerline of the right-of-way dedicated for such road or street.
- AP 1-3.2 The subdivider shall submit all subgrade tests for approval to the City Engineer or Public Works Engineer prior to placing stone in the right-of-way.
- AP 1-3.3 After preparation of the subgrade, the roadbed shall be surfaced with crushed limestone. The crushed stone shall be a TDOT Type "A", grading "D", Pug Mill mix as specified in Sections 303 & 903, TDOT STANDARD SPECIFICATIONS.
- AP 1-3.4 Spreading of the stone shall be done uniformly over the area to be covered in a maximum of three (3) inch lifts and shall not be dumped in piles
- AP 1-3.5 After spreading, the stone shall be rolled until thoroughly compacted. The compacted thickness of the stone shall be no less than the minimum for that particular street classification.
- AP 1-3.6 Upon completion of the base stone, the subdivider shall contact the SPWD and request core samples, proof-rolling, etc. test be performed and receive written approval before commencing and further construction.

# APPENDIX – B - PUBLIC WORKS DETAILS

Detail B-1 Typical Street Section – Minor - Residential



Detail B-2 Typical Street Section – Local Residential



Detail B-3 Typical Street Section - Collector

